

\$579,900 - 355 Pinewind Road Ne, Calgary

MLS® #A2236834

\$579,900

4 Bedroom, 3.00 Bathroom, 1,177 sqft
Residential on 0.11 Acres

Pineridge, Calgary, Alberta

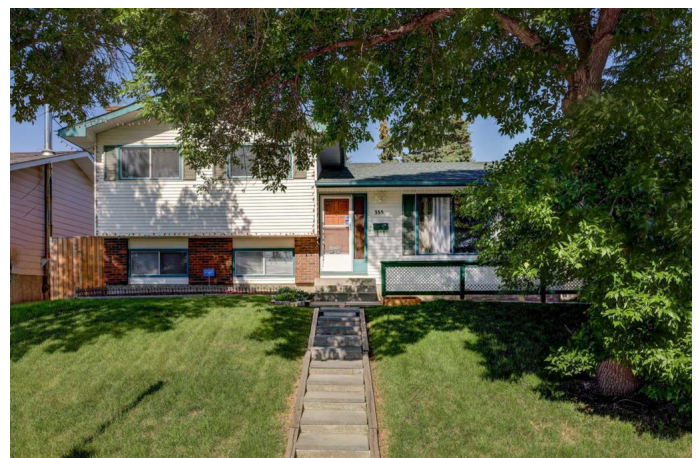
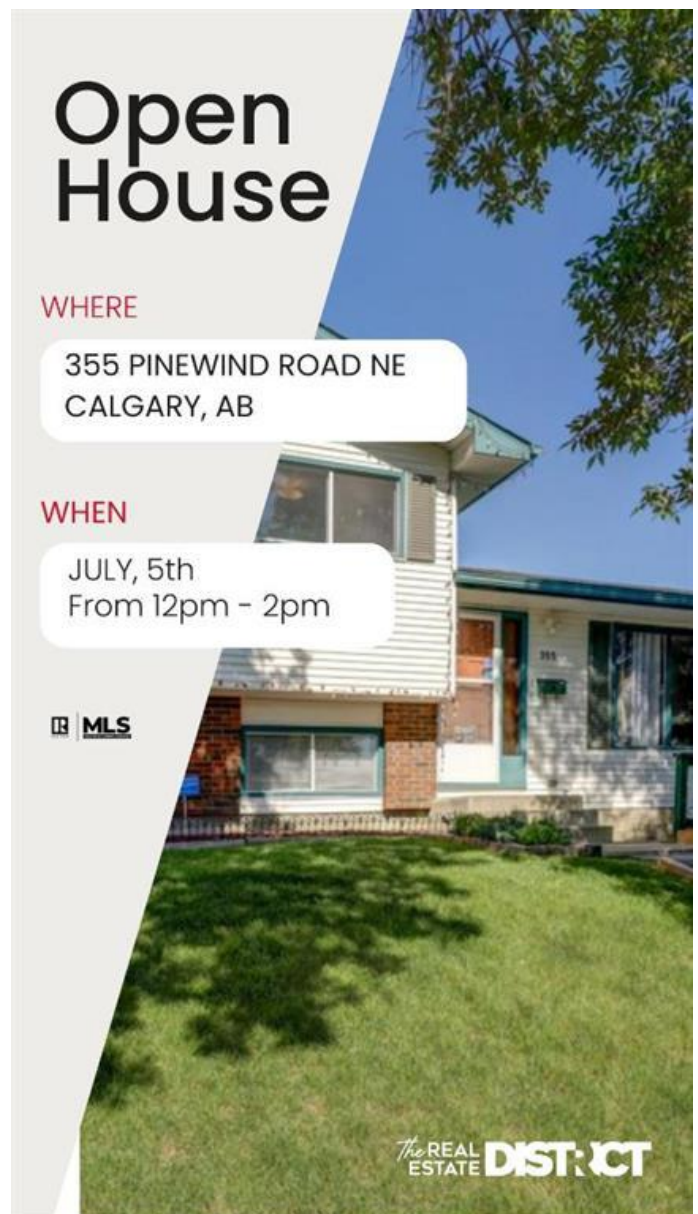
****OPEN HOUSE - SATURDAY JULY 5 -
12:00PM-2:00PM** **\$579,900! RARE
OPPORTUNITY â€œ MOVE-IN READY &
IMMACULATELY MAINTAINED!****

Welcome to this beautifully updated 4-level split in the heart of ****Pineridge****, lovingly cared for by its original owners for over 40 years. Offering ****1,176 sq ft**** of functional living space above grade and countless thoughtful upgrades, this home is a true standout.

****FRESH 2025 UPDATES**** include new kitchen flooring and main floor paint, giving the space a modern and inviting feel. Enjoy summer in your ****private outdoor oasis**** featuring a two-tier deck (2024), newer concrete patios and sidewalks (2023), custom planters, and a charming gazeboâ€”perfect for relaxing or entertaining.

Mechanically sound with a ****new furnace motor (2020)****, ****commercial-grade A/C (2019)****, and ****35-year fiberglass shingles with a lifetime warranty (2009)****. Inside, you'll find ****4 spacious bedrooms**** including a main-floor flex room ideal for guests or a home office, along with ****3 full bathrooms****, one of which is a renovated ensuite in the refreshed primary suite.

The basement is fully finished with a large ****family room****, ****games area****, and



dedicated **storage space**. A **double detached garage** offers additional workshop potential, and the **fenced yard** is perfect for kids and pets.

Located in a **prime, family-friendly community**, this home is within walking distance to schools, parks, shopping, restaurants, and the Village Square Leisure Centre. Quick access to **Memorial Drive and Stoney Trail** makes commuting a breeze.

This is your chance to own a meticulously updated and move-in ready home in one of Calgary’s most established neighbourhoods at an unbeatable price!

Built in 1975

Essential Information

MLS® #	A2236834
Price	\$579,900
Bedrooms	4
Bathrooms	3.00
Full Baths	2
Half Baths	1
Square Footage	1,177
Acres	0.11
Year Built	1975
Type	Residential
Sub-Type	Detached
Style	4 Level Split
Status	Active

Community Information

Address	355 Pinewind Road Ne
Subdivision	Pineridge
City	Calgary
County	Calgary
Province	Alberta

Postal Code T1Y 2H2

Amenities

Parking Spaces 2
Parking Alley Access, Double Garage
of Garages 2

Interior

Interior Features Breakfast Bar, Built-in Features, Floorplan, See Remarks, Storage, Dry Bar
Appliances Dishwasher, Dryer, Microwave, Refrigerator, Stove(s), Washer, Window Coverings
Heating Forced Air, Natural Gas
Cooling Central Air
Fireplace Yes
of Fireplaces 1
Fireplaces Basement, Brick Facing, Family Room, Wood Burning
Has Basement Yes
Basement Finished, Full, Partially Finished



Exterior

Exterior Features Garden, Private Yard, Storage
Lot Description Back Yard, City Lot, Front Yard, Garden, Gentle Sloping, Rectangular Lot
Roof Asphalt Shingle
Construction Vinyl Siding, Wood Frame
Foundation Poured Concrete

Additional Information

Date Listed July 3rd, 2025
Days on Market 1
Zoning R-CG

Listing Details

Listing Office The Real Estate District

Data is supplied by Pillar 9â„¢ MLSÂ® System. Pillar 9â„¢ is the owner of the copyright in its MLSÂ® System. Data is deemed reliable but is not guaranteed accurate by Pillar 9â„¢. The trademarks MLSÂ®, Multiple Listing ServiceÂ® and the associated logos are owned by The Canadian Real Estate Association (CREA) and identify the quality of services provided by real estate professionals who are members of CREA. Used under license.