

\$38,000 - 142 1 Avenue W, Craigmyle

MLS® #A2231849

\$38,000

0 Bedroom, 0.00 Bathroom,
Land on 0.14 Acres

NONE, Craigmyle, Alberta

Great opportunity for the investor or home builder wanting to build their own dream home and this three lot parcel of land. 150x125 sq. ft vacant lot(s) in the Hamlet of Craigmyle. The center lot has gas, sewer and water to the lot line, power is on the street.

Essential Information

| | |
|-----------|------------------|
| MLS® # | A2231849 |
| Price | \$38,000 |
| Bathrooms | 0.00 |
| Acres | 0.14 |
| Type | Land |
| Sub-Type | Residential Land |
| Status | Active |

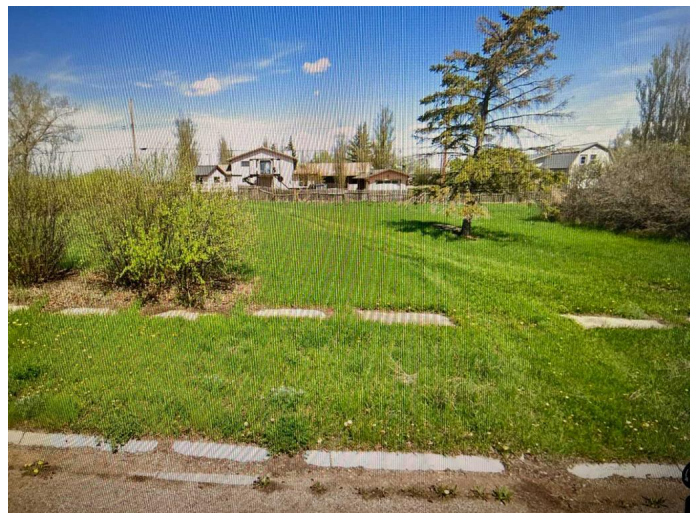
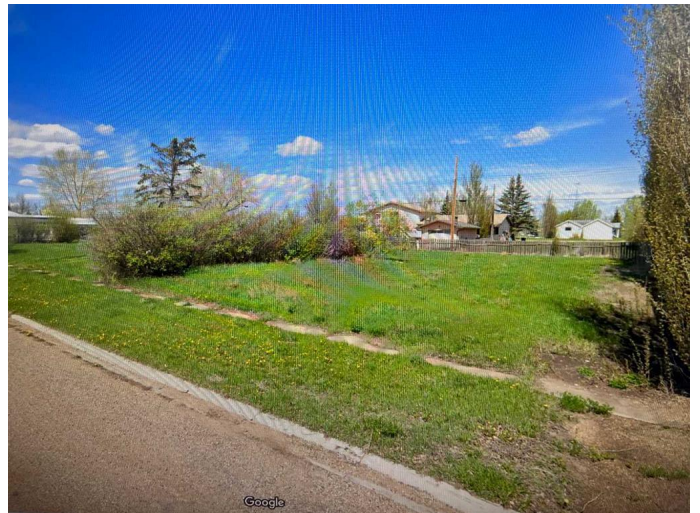
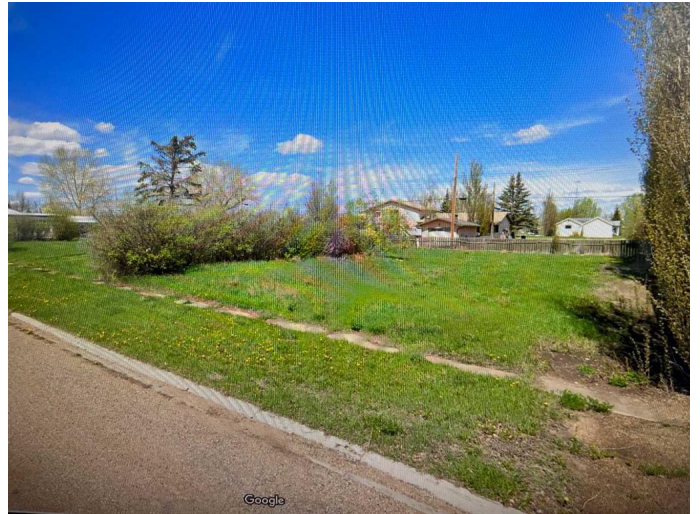
Community Information

| | |
|-------------|-----------------|
| Address | 142 1 Avenue W |
| Subdivision | NONE |
| City | Craigmyle |
| County | Starland County |
| Province | Alberta |
| Postal Code | T0J 0T0 |

Additional Information

| | |
|----------------|-----------------|
| Date Listed | June 16th, 2025 |
| Days on Market | 2 |
| Zoning | HR |

Listing Details



Listing Office

RE/MAX Real Estate (Central)

Data is supplied by Pillar 9â„¢ MLSÂ® System. Pillar 9â„¢ is the owner of the copyright in its MLSÂ® System. Data is deemed reliable but is not guaranteed accurate by Pillar 9â„¢. The trademarks MLSÂ®, Multiple Listing ServiceÂ® and the associated logos are owned by The Canadian Real Estate Association (CREA) and identify the quality of services provided by real estate professionals who are members of CREA. Used under license.