

\$175,000 - 216 Grenfell Crescent, Fort McMurray

MLS® #A2231146

\$175,000

3 Bedroom, 1.00 Bathroom, 1,145 sqft

Residential on 0.10 Acres

Gregoire Park, Fort McMurray, Alberta

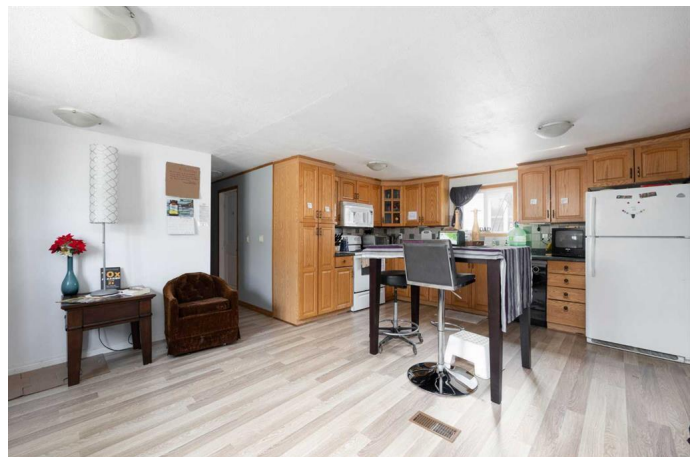
Welcome to 216 Grenfell Crescent – Where Comfort Meets Style!

Step into modern living at its finest in this beautifully updated 3-bedroom mobile home, perfectly situated on a generous 4,542 sq. ft. lot. Offering the perfect blend of comfort, space, and functionality, this home has been meticulously cared for and radiates timeless charm with a fresh, rejuvenated ambiance.

Be greeted by a grand front veranda, setting the stage for warm welcomes and morning coffees. Inside, a spacious mudroom provides excellent storage and organization—an ideal entry point for busy households. The primary bedroom is your private retreat, featuring a large walk-in closet and a spa-like ensuite with a corner jetted tub for ultimate relaxation. Two additional bedrooms offer flexibility for a growing family, home office, or guest accommodations.

The heart of the home shines in the open-concept kitchen and living area, seamlessly connected by elegant French doors. The bright, functional kitchen is perfect for culinary adventures and entertaining, while the adjacent dining space completes the welcoming flow for both everyday meals and festive gatherings.

Step outside and enjoy your private outdoor oasis, complete with a 12x20 wired and



insulated shop with overhead storageâ€”ideal for hobbies, projects, or extra storage. The brick patio offers a beautiful space for BBQs, outdoor dining, or simply soaking up the sun.

With plenty of yard space, this home offers the feel of a single-family property in an affordable package.

Don't miss out on this exceptional opportunityâ€”call today to schedule your private showing and make this hidden gem your own!

Built in 1970

Essential Information

MLS® #	A2231146
Price	\$175,000
Bedrooms	3
Bathrooms	1.00
Full Baths	1
Square Footage	1,145
Acres	0.10
Year Built	1970
Type	Residential
Sub-Type	Detached
Style	Single Wide Mobile Home
Status	Active

Community Information

Address	216 Grenfell Crescent
Subdivision	Gregoire Park
City	Fort McMurray
County	Wood Buffalo
Province	Alberta
Postal Code	T9H 2M6

Amenities

Amenities	Parking
Parking Spaces	4
Parking	Parking Pad, RV Access/Parking, Single Garage Detached
# of Garages	1

Interior

Interior Features	Jetted Tub, Laminate Counters
Appliances	Other, See Remarks
Heating	Forced Air
Cooling	None
Basement	None

Exterior

Exterior Features	Barbecue
Lot Description	Back Yard
Roof	Asphalt Shingle
Construction	Vinyl Siding, Wood Frame
Foundation	Pillar/Post/Pier

Additional Information

Date Listed	June 13th, 2025
Days on Market	14
Zoning	RMH-2

Listing Details

Listing Office	RE/MAX Connect
----------------	----------------

Data is supplied by Pillar 9â„¢ MLS® System. Pillar 9â„¢ is the owner of the copyright in its MLS® System. Data is deemed reliable but is not guaranteed accurate by Pillar 9â„¢. The trademarks MLS®, Multiple Listing Service® and the associated logos are owned by The Canadian Real Estate Association (CREA) and identify the quality of services provided by real estate professionals who are members of CREA. Used under license.