

\$489,900 - 328 Grizzly Crescent N, Lethbridge

MLS® #A2230458

\$489,900

4 Bedroom, 3.00 Bathroom, 1,113 sqft

Residential on 0.11 Acres

Uplands, Lethbridge, Alberta

This is the perfect family home!! This is a beautiful home with a fantastic open floor plan.

3 bedrooms and 2 full baths, spacious living room and kitchen all on the MAIN floor. An additional bedroom/Office in the basement, a massive family room for entertaining friends or just enjoying family night. A double attached garage, A/C, gas fireplace and a great neighborhood are just some of the things this home has to offer!

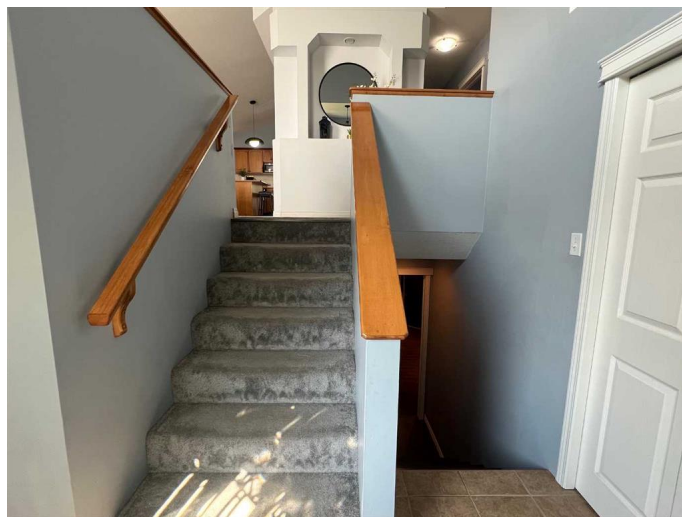
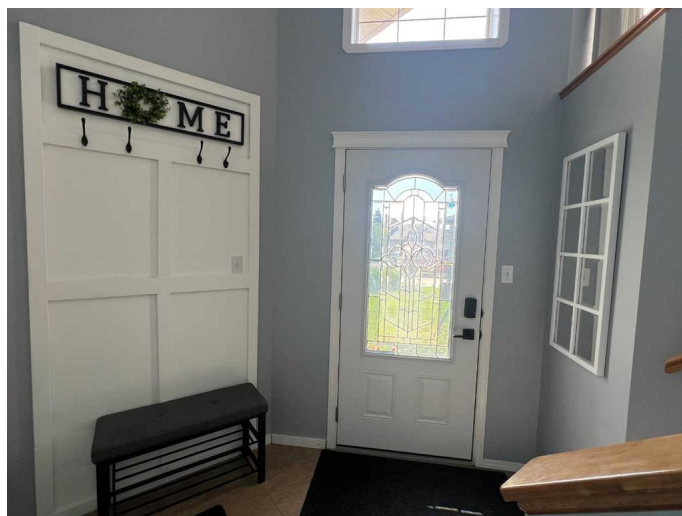
Built in 2005

Essential Information

MLS® #	A2230458
Price	\$489,900
Bedrooms	4
Bathrooms	3.00
Full Baths	3
Square Footage	1,113
Acres	0.11
Year Built	2005
Type	Residential
Sub-Type	Detached
Style	Bi-Level
Status	Active

Community Information

Address	328 Grizzly Crescent N
Subdivision	Uplands



City	Lethbridge
County	Lethbridge
Province	Alberta
Postal Code	T1J 4A4

Amenities

Parking Spaces	4
Parking	Double Garage Attached, Driveway
# of Garages	2

Interior

Interior Features	No Smoking Home, Open Floorplan
Appliances	Central Air Conditioner, Dishwasher, Range Hood, Refrigerator, Stove(s)
Heating	Forced Air
Cooling	Central Air
Fireplace	Yes
# of Fireplaces	1
Fireplaces	Basement, Gas, Stone
Has Basement	Yes
Basement	Finished, Full

Exterior

Exterior Features	None
Lot Description	Back Yard, Landscaped, Lawn
Roof	Asphalt Shingle
Construction	Stone, Vinyl Siding
Foundation	Poured Concrete

Additional Information

Date Listed	June 12th, 2025
Days on Market	7
Zoning	R-L

Listing Details

Listing Office	Lethbridge Real Estate.com
----------------	----------------------------

Data is supplied by Pillar 9â„¢ MLSÂ® System. Pillar 9â„¢ is the owner of the copyright in its MLSÂ® System. Data is deemed reliable but is not guaranteed accurate by Pillar 9â„¢. The trademarks MLSÂ®, Multiple Listing ServiceÂ® and the associated logos are owned by The Canadian Real Estate Association (CREA) and identify the quality of services provided by real estate professionals who are members of CREA. Used under license.