

\$469,000 - 111, 176 Kananaskis Way, Canmore

MLS® #A2229045

\$469,000

2 Bedroom, 1.00 Bathroom, 648 sqft

Residential on 0.00 Acres

Bow Valley Trail, Canmore, Alberta

VACANT CONDO EASY TO SHOW1

Fabulous ground floor unit with two bedrooms, open floor plan, in-suite laundry and private patio! Whiskey Jack offers a convenient location close to downtown district and walking distance to shopping, amenities and transportation. This condo includes secure underground heated parking and storage locker; the perfect starter home or investment. Pets allowed with board approval and zoned as Employee Housing District requires minimum 20 hours a week in Canmore area.

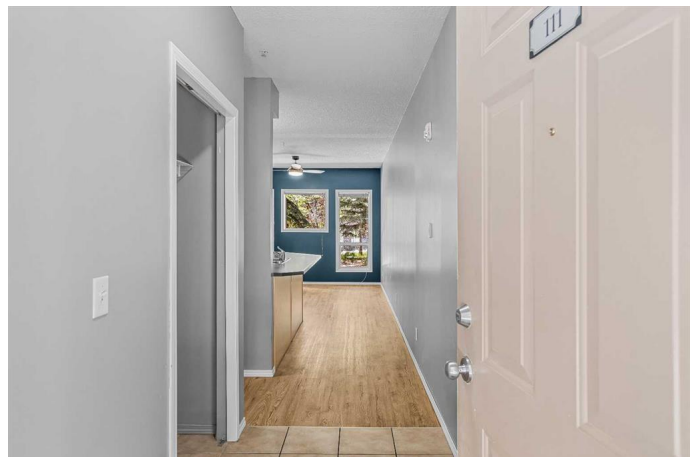
Built in 2001

Essential Information

MLS® #	A2229045
Price	\$469,000
Bedrooms	2
Bathrooms	1.00
Full Baths	1
Square Footage	648
Acres	0.00
Year Built	2001
Type	Residential
Sub-Type	Apartment
Style	Single Level Unit
Status	Active

Community Information

Address 111, 176 Kananaskis Way



Subdivision	Bow Valley Trail
City	Canmore
County	Bighorn No. 8, M.D. of
Province	Alberta
Postal Code	T1W3E4

Amenities

Amenities	Bicycle Storage, Elevator(s), Secured Parking, Storage
Parking Spaces	1
Parking	Parkade

Interior

Interior Features	Elevator, Open Floorplan
Appliances	Electric Range, Oven, Range Hood, Refrigerator, Washer/Dryer Stacked
Heating	In Floor, Natural Gas, Radiant
Cooling	None
# of Stories	3

Exterior

Exterior Features	Other
Roof	Asphalt Shingle
Construction	Concrete, Stone

Additional Information

Date Listed	June 8th, 2025
Days on Market	13
Zoning	EHD - Employee housing di

Listing Details

Listing Office	Bow Valley Realty Ltd.
----------------	------------------------

Data is supplied by Pillar 9â„¢ MLSÂ® System. Pillar 9â„¢ is the owner of the copyright in its MLSÂ® System. Data is deemed reliable but is not guaranteed accurate by Pillar 9â„¢. The trademarks MLSÂ®, Multiple Listing ServiceÂ® and the associated logos are owned by The Canadian Real Estate Association (CREA) and identify the quality of services provided by real estate professionals who are members of CREA. Used under license.