

\$239,000 - 244059 Range Road 245, Strathmore

MLS® #A2228157

\$239,000

0 Bedroom, 0.00 Bathroom,
Land on 3.00 Acres

NONE, Strathmore, Alberta

No Gravel. Paved to your Driveway of Choice.
3 Acres. Countryside Views, Wildlife, TREES,
Grass. New Approach and Drilled Water Well.
Power and Gas at the Road. Build your Dream
Here. 5 minutes East of Strathmore. Great
Neighbors. Enjoy the pond view to the North
belongs to the neighbors. Just 10 minutes
East of Strathmore. No Building Commitment.
Amazing Opportunity. Location. Location.
Location.

Essential Information

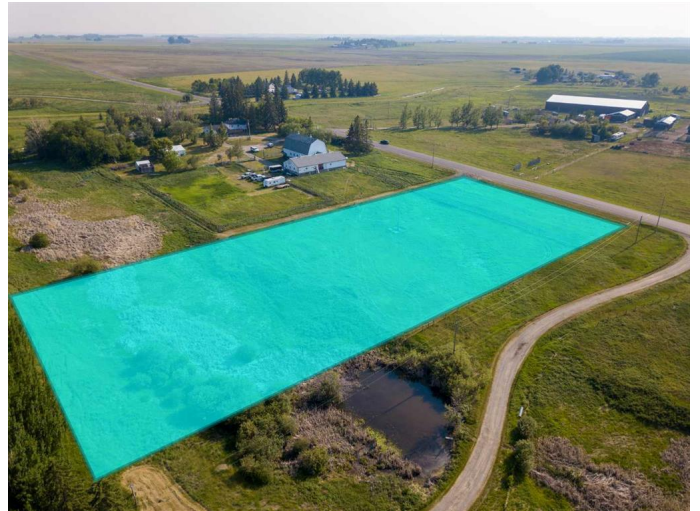
MLS® #	A2228157
Price	\$239,000
Bathrooms	0.00
Acres	3.00
Type	Land
Sub-Type	Residential Land
Status	Active

Community Information

Address	244059 Range Road 245
Subdivision	NONE
City	Strathmore
County	Wheatland County
Province	Alberta
Postal Code	T1P 1J6

Additional Information

Date Listed	June 10th, 2025
-------------	-----------------



Days on Market	8
Zoning	CR

Listing Details

Listing Office	RE/MAX Landan Real Estate
----------------	---------------------------

Data is supplied by Pillar 9â„¢ MLSÂ® System. Pillar 9â„¢ is the owner of the copyright in its MLSÂ® System. Data is deemed reliable but is not guaranteed accurate by Pillar 9â„¢. The trademarks MLSÂ®, Multiple Listing ServiceÂ® and the associated logos are owned by The Canadian Real Estate Association (CREA) and identify the quality of services provided by real estate professionals who are members of CREA. Used under license.