

\$295,000 - 00000 0000, Lac La Biche

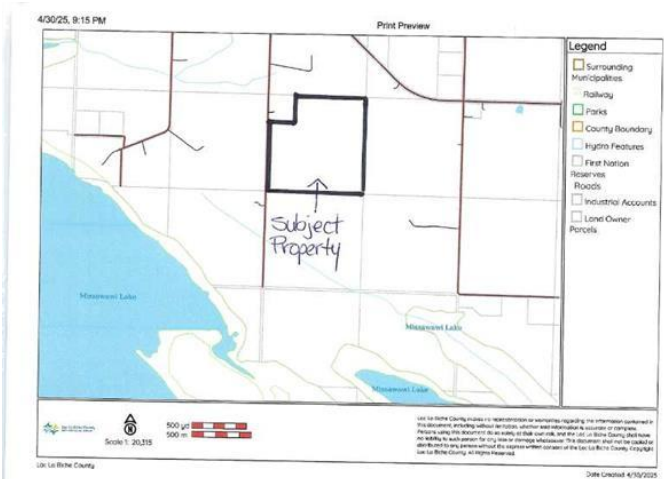
MLS® #A2227389

\$295,000

0 Bedroom, 0.00 Bathroom,
Land on 148.90 Acres

NONE, Lac La Biche, Alberta

148.9 acre farm parcel with approximately 85 acres open. Parcel contains 2 dugouts which could be used for livestock. Gravelled field access road with gravel pad suitable for bin yard and equipment. Existing hay crop is part of a cropping agreement for this season only. Contains treed areas that are suitable for clearing. Excellent parcel for a farm startup or addition to existing farming operation.



Essential Information

| | |
|-----------|------------------|
| MLS® # | A2227389 |
| Price | \$295,000 |
| Bathrooms | 0.00 |
| Acres | 148.90 |
| Type | Land |
| Sub-Type | Residential Land |
| Status | Active |

Community Information

| | |
|-------------|---------------------|
| Address | 00000 0000 |
| Subdivision | NONE |
| City | Lac La Biche |
| County | Lac La Biche County |
| Province | Alberta |
| Postal Code | T0A2C0 |

Additional Information

| | |
|-------------|----------------|
| Date Listed | May 31st, 2025 |
|-------------|----------------|

| | |
|----------------|--------------|
| Days on Market | 19 |
| Zoning | Agricultural |

Listing Details

| | |
|----------------|---------------------------------|
| Listing Office | CENTURY 21 LAKELAND REAL ESTATE |
|----------------|---------------------------------|

Data is supplied by Pillar 9â„¢ MLS® System. Pillar 9â„¢ is the owner of the copyright in its MLS® System. Data is deemed reliable but is not guaranteed accurate by Pillar 9â„¢. The trademarks MLS®, Multiple Listing Service® and the associated logos are owned by The Canadian Real Estate Association (CREA) and identify the quality of services provided by real estate professionals who are members of CREA. Used under license.