

\$374,900 - 52, 70544 243 Rr, Rural Greenview No. 16, M.D. of

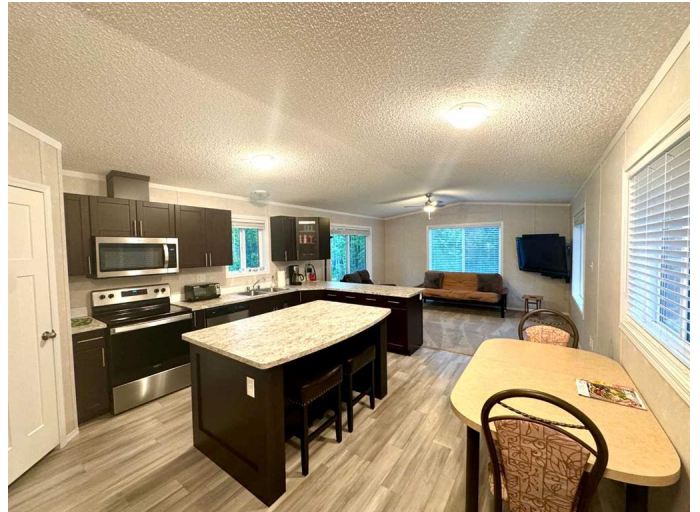
MLS® #A2226852

\$374,900

3 Bedroom, 1.00 Bathroom, 1,088 sqft
Residential on 2.46 Acres

NONE, Rural Greenview No. 16, M.D. of,
Alberta

ESCAPE THE CITY LIGHTS AND FIND TRANQUILITY AT THE LAKE!!! SHARED DOCK AND BOAT LAUNCH STEPS AWAY, FISHING, GOLFING AND RECREATIONAL PARADISE! MATURELY TREED PRIVACY WITH TONS OF ROOM TO MAKE THIS PROPERTY YOUR OWN! LOW MAINTENANCE LIVING WHETHER IT IS YOUR COTTAGE OR PERMANENT RESIDENCE, THIS HOME CAN BE ENJOYED ALL SEASONS!!! BETTER THAN NEW MODULAR SRI HOME BUILT UNDER CONTROLS CREATES A NO MAINTENANCE LIVING WITH A PRIVATE TREED SETTING CLOSE TO THE DOCKS AND GREENVIEW GOLF COURSE!!! 3 bedrooms, 1 bathroom, and 1088 sq ft of living space. The kitchen has dark-stained cabinets, an island with eating bar, stainless steel appliances, a corner pantry, vinyl plank flooring, and a dining area. The living room has large windows letting in natural light. Primary bedroom is large and spacious to fit your king bed! Frontage provides nice space for visitors to park trailers or for rec space. Sheltered firepit area. DETACHED GARAGE/SHOP IS GREAT FOR TOYS, TO WORK IN AND OR STORE THE BOAT !!! Well on property provides all the water you need! Mature acreage with flexible finance options ready to call home or your weekend



getaway!!! Call SEAN for details
780-897-3520

Built in 2020

Essential Information

MLS® #	A2226852
Price	\$374,900
Bedrooms	3
Bathrooms	1.00
Full Baths	1
Square Footage	1,088
Acres	2.46
Year Built	2020
Type	Residential
Sub-Type	Detached
Style	Acreage with Residence, Modular Home
Status	Active

Community Information

Address	52, 70544 243 Rr
Subdivision	NONE
City	Rural Greenview No. 16, M.D. of
County	Greenview No. 16, M.D. of
Province	Alberta
Postal Code	T0H 3N0

Amenities

Parking	Parking Pad
---------	-------------

Interior

Interior Features	Laminate Counters
Appliances	Dishwasher, Electric Stove, Refrigerator, Washer/Dryer
Heating	Forced Air, Natural Gas
Cooling	None
Basement	None

Exterior

Exterior Features	Private Yard
-------------------	--------------

Lot Description	Landscaped, Lawn
Roof	Asphalt Shingle
Construction	Vinyl Siding
Foundation	Piling(s)

Additional Information

Date Listed	June 2nd, 2025
Days on Market	20
Zoning	CR-3

Listing Details

Listing Office	RE/MAX Grande Prairie
----------------	-----------------------

Data is supplied by Pillar 9â„¢ MLS® System. Pillar 9â„¢ is the owner of the copyright in its MLS® System. Data is deemed reliable but is not guaranteed accurate by Pillar 9â„¢. The trademarks MLS®, Multiple Listing Service® and the associated logos are owned by The Canadian Real Estate Association (CREA) and identify the quality of services provided by real estate professionals who are members of CREA. Used under license.