

\$689,900 - 12 Turner Close Se, Medicine Hat

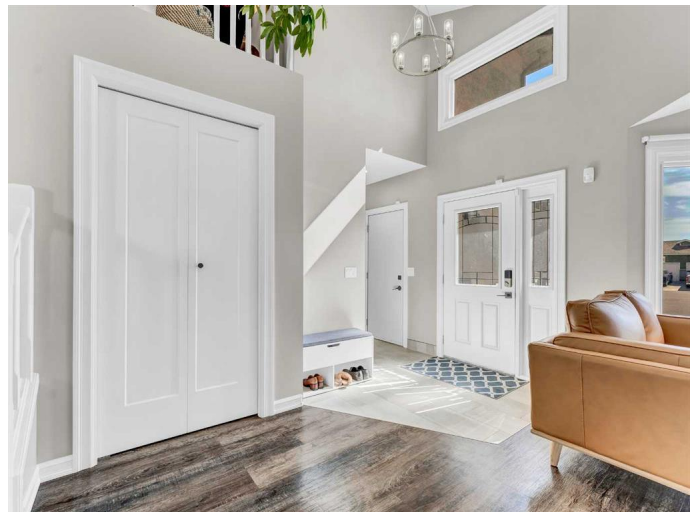
MLS® #A2226818

\$689,900

5 Bedroom, 4.00 Bathroom, 2,103 sqft
Residential on 0.12 Acres

Ross Glen, Medicine Hat, Alberta

Nestled in a quiet cul-de-sac and surrounded by green spaces, parks, and scenic walking trails, this beautifully maintained 1.5-storey home offers the perfect blend of comfort, style, and functionality. With 2,103 sq ft, 5 bedrooms, and 4 bathrooms, there's room for the whole family. Step inside to vaulted ceilings and large front windows that flood the main floor with natural light. The open-concept living, dining, and kitchen areas are perfect for entertaining. The stunning kitchen features crisp white cabinetry, a mix of granite and quartz countertops, coffee bar, stainless steel appliances, and a large island with custom LED under-lighting and a built-in wine rack. A cozy family room with a gas fireplace opens to the main floor bedroom/office, a 3pc bath, and laundry. Upstairs, you'll find a spacious primary bedroom with walk-in closet and 4pc ensuite, two more generously sized bedrooms, a 4pc bathroom with freshly painted cabinets, and an open nook area overlooking the main floor. The fully developed basement features a large family/rec room, a fifth bedroom, 3pc bathroom with a tiled shower, and ample storage. Enjoy summer to the fullest in the beautifully landscaped backyard oasis! Featuring a maintenance-free deck, a lower patio with pergola, and 9 raised garden beds. This property also lights up with the custom Gemstone LED lighting installed; customizable and controlled with your phone to light up the property for any occasion! The double attached heated garage, concrete driveway,



and RV parking provide plenty of space for vehicles and toys. This home offers space, style, and updates in one of the city's most desirable neighbourhoods. (furnace replaced 3 months ago)

Built in 1995

Essential Information

MLS® #	A2226818
Price	\$689,900
Bedrooms	5
Bathrooms	4.00
Full Baths	3
Half Baths	1
Square Footage	2,103
Acres	0.12
Year Built	1995
Type	Residential
Sub-Type	Detached
Style	1 and Half Storey
Status	Active

Community Information

Address	12 Turner Close Se
Subdivision	Ross Glen
City	Medicine Hat
County	Medicine Hat
Province	Alberta
Postal Code	T1B 4G5

Amenities

Parking Spaces	4
Parking	Double Garage Attached, Driveway, Heated Garage, Off Street, RV Access/Parking
# of Garages	2

Interior

Interior Features	Built-in Features, Ceiling Fan(s), Central Vacuum, High Ceilings, Kitchen
-------------------	---

	Island, Storage, Walk-In Closet(s)
Appliances	Central Air Conditioner, Dishwasher, Garage Control(s), Garburator, Microwave Hood Fan, Refrigerator, Stove(s), Washer/Dryer, Window Coverings
Heating	Forced Air, Natural Gas
Cooling	Central Air
Fireplace	Yes
# of Fireplaces	1
Fireplaces	Family Room, Gas
Has Basement	Yes
Basement	Finished, Full

Exterior

Exterior Features	Storage
Lot Description	Landscaped
Roof	Asphalt Shingle
Construction	Brick, Stucco
Foundation	Poured Concrete

Additional Information

Date Listed	June 2nd, 2025
Days on Market	20
Zoning	R-LD

Listing Details

Listing Office	ROYAL LEPAGE COMMUNITY REALTY
----------------	-------------------------------

Data is supplied by Pillar 9â„¢ MLS® System. Pillar 9â„¢ is the owner of the copyright in its MLS® System. Data is deemed reliable but is not guaranteed accurate by Pillar 9â„¢. The trademarks MLS®, Multiple Listing Service® and the associated logos are owned by The Canadian Real Estate Association (CREA) and identify the quality of services provided by real estate professionals who are members of CREA. Used under license.