

# \$2,982,000 - Range Road 281 & Township Road 252, Rural Rocky View County

---

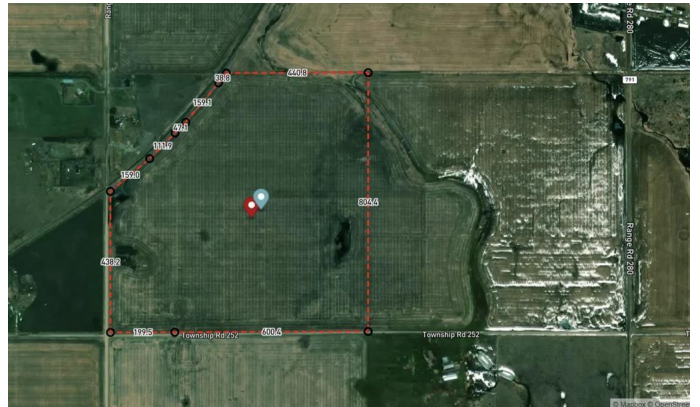
MLS® #A2226246

**\$2,982,000**

0 Bedroom, 0.00 Bathroom,  
Land on 142.63 Acres

NONE, Rural Rocky View County, Alberta

Incredible opportunity to own 143 Acres farm land located in Rocky View County with close location to the Conrich ASP as well as Delacour ASP. This property is located on the corner of Range Road 281 and Township Road 252 which allows great access. Currently Ag land with crop planted for this year. CN Rail line currently runs adjacent to the property which allows for a potential rail use as well. Rocky View should allow a first parcel scenario upon approval of course.



## Essential Information

MLS® #	A2226246
Price	\$2,982,000
Bathrooms	0.00
Acres	142.63
Type	Land
Sub-Type	Commercial Land
Status	Active

## Community Information

Address	Range Road 281 & Township Road 252
Subdivision	NONE
City	Rural Rocky View County
County	Rocky View County
Province	Alberta
Postal Code	T1T 1T1

## Additional Information

Date Listed	June 3rd, 2025
Days on Market	13
Zoning	AG

## Listing Details

Listing Office	RE/MAX Complete Realty
----------------	------------------------

Data is supplied by Pillar 9â„¢ MLS® System. Pillar 9â„¢ is the owner of the copyright in its MLS® System. Data is deemed reliable but is not guaranteed accurate by Pillar 9â„¢. The trademarks MLS®, Multiple Listing Service® and the associated logos are owned by The Canadian Real Estate Association (CREA) and identify the quality of services provided by real estate professionals who are members of CREA. Used under license.