

\$225,000 - Hwy 743, Rural Northern Lights, County of

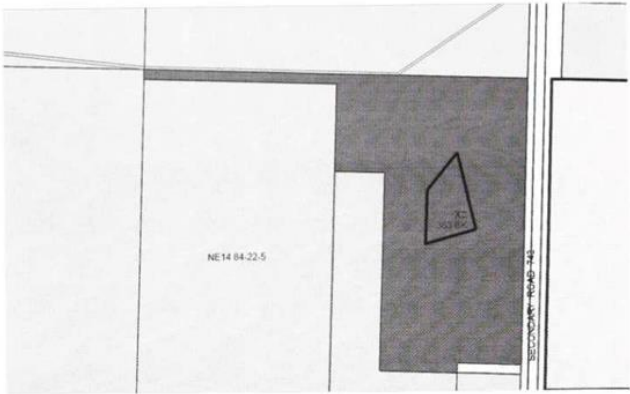
MLS® #A2226009

\$225,000

0 Bedroom, 0.00 Bathroom,
Land on 52.60 Acres

NONE, Rural Northern Lights, County of,
Alberta

Zoned M 1 General Industrial. 2 1/2 miles or 5 km North of Peace River. There is 52.6 acre Industrial lots here. Located on Hwy 743 with highway access - between Peace River and Mercer Mill you would have great access to all the amenities needed - Very low taxes currently and one of the larger parcels available in the area



Essential Information

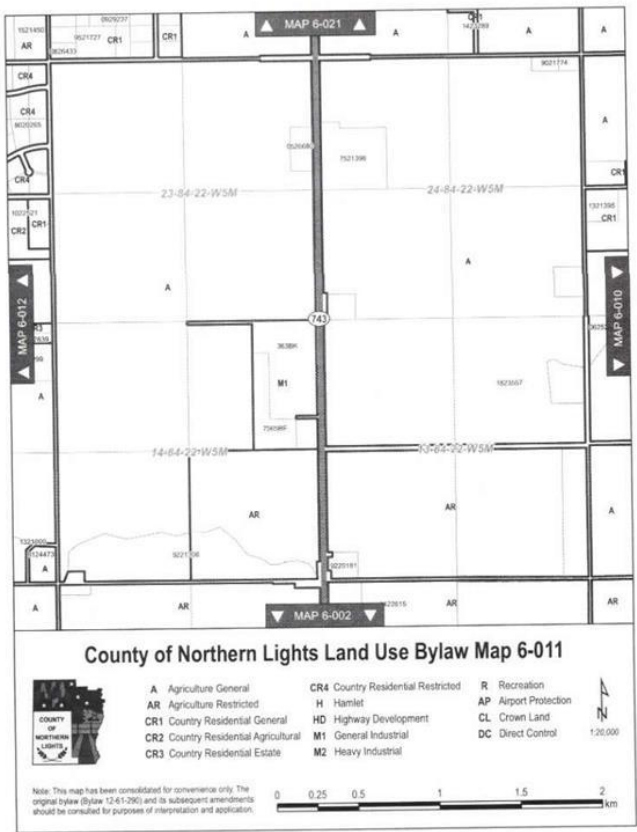
MLS® #	A2226009
Price	\$225,000
Bathrooms	0.00
Acres	52.60
Type	Land
Sub-Type	Industrial Land
Status	Active

Community Information

Address	Hwy 743
Subdivision	NONE
City	Rural Northern Lights, County of
County	Northern Lights, County of
Province	Alberta
Postal Code	T8S1S4

Additional Information

Date Listed	May 27th, 2025
-------------	----------------



Days on Market	25
Zoning	M1

Listing Details

Listing Office	Century 21 Town and Country Realty
----------------	------------------------------------

Data is supplied by Pillar 9â„¢ MLS® System. Pillar 9â„¢ is the owner of the copyright in its MLS® System. Data is deemed reliable but is not guaranteed accurate by Pillar 9â„¢. The trademarks MLS®, Multiple Listing Service® and the associated logos are owned by The Canadian Real Estate Association (CREA) and identify the quality of services provided by real estate professionals who are members of CREA. Used under license.