

\$525,000 - 27 Castleridge Road Ne, Calgary

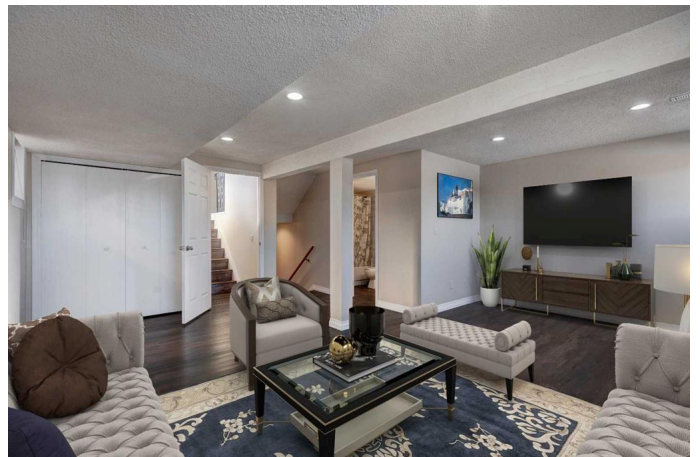
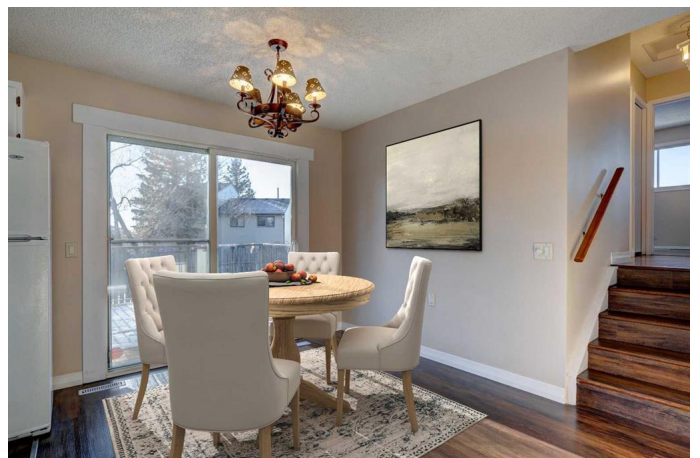
MLS® #A2223405

\$525,000

3 Bedroom, 2.00 Bathroom, 860 sqft
Residential on 0.12 Acres

Castleridge, Calgary, Alberta

A classic 4-level split located in the northeast community of Castleridge. This well-maintained family home features numerous upgrades throughout. The main floor offers a bright, open-concept layout with a spacious living room, plenty of natural light, a beautiful kitchen with granite countertops, a formal dining area, and access to the backyard via a brand new deck. Upstairs, you'll find three generously sized bedrooms, including the primary, along with a full bathroom. The lower level features a large family or games room and another full bathroom, both with updated flooring. In the basement, there are two versatile rooms with cozy carpeting—ideal for a home office, hobby room, or extra storage. Outside, you'll enjoy a large yard, a huge deck, and an RV access gate. Set on a big corner lot with paved alley access from both the side and back, this home is conveniently close to schools, shopping, parks, popular dining spots, public transit, and the McKnight C-Train Station, with quick connections to major routes like Metis Trail, McKnight Blvd, and Stoney Trail. Don't miss your chance—call today!



Built in 1980

Essential Information

MLS® # A2223405

Price \$525,000

Bedrooms	3
Bathrooms	2.00
Full Baths	2
Square Footage	860
Acres	0.12
Year Built	1980
Type	Residential
Sub-Type	Detached
Style	4 Level Split
Status	Active

Community Information

Address	27 Castleridge Road Ne
Subdivision	Castleridge
City	Calgary
County	Calgary
Province	Alberta
Postal Code	T3J 1N8

Amenities

Parking	Off Street, RV Access/Parking
---------	-------------------------------

Interior

Interior Features	Granite Counters
Appliances	Dryer, Electric Stove, Range Hood, Refrigerator, Washer, Window Coverings
Heating	Forced Air, Natural Gas
Cooling	None
Has Basement	Yes
Basement	Finished, Full

Exterior

Exterior Features	Lighting
Lot Description	Back Lane, Landscaped, Rectangular Lot, Treed
Roof	Asphalt Shingle
Construction	Stucco, Wood Frame
Foundation	Poured Concrete

Additional Information

Date Listed May 21st, 2025

Days on Market 26

Zoning R-CG

Listing Details

Listing Office RE/MAX Real Estate (Central)

Data is supplied by Pillar 9â,,ç MLSÂ® System. Pillar 9â,,ç is the owner of the copyright in its MLSÂ® System. Data is deemed reliable but is not guaranteed accurate by Pillar 9â,,ç. The trademarks MLSÂ®, Multiple Listing ServiceÂ® and the associated logos are owned by The Canadian Real Estate Association (CREA) and identify the quality of services provided by real estate professionals who are members of CREA. Used under license.