

\$634,999 - 1041 Waterford Drive, Chestermere

MLS® #A2223129

\$634,999

3 Bedroom, 3.00 Bathroom, 1,728 sqft
Residential on 0.08 Acres

Chesterview Estates, Chestermere, Alberta

Welcome to this stunning home in the highly sought-after Waterford community of Chestermere!

This beautifully designed property offers the perfect blend of elegance and functionality, complete with a double attached front garage and a spacious lot.

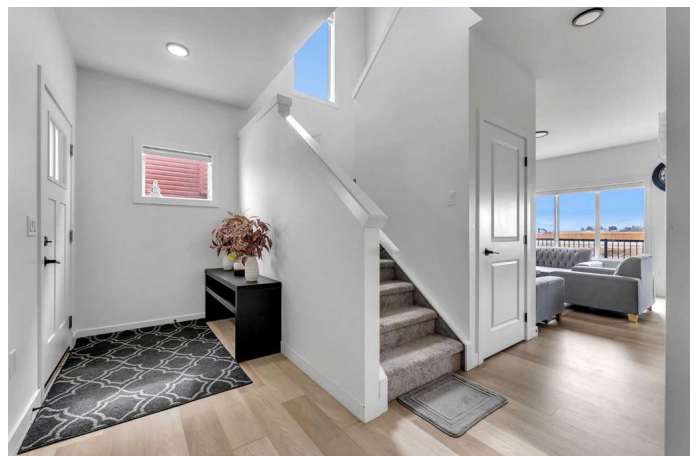
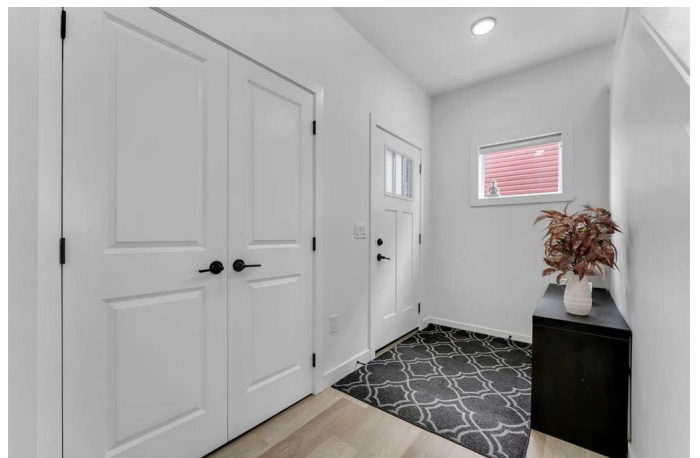
Step inside to discover a bright, open-concept layout featuring 9-foot ceilings and a versatile main floor den—ideal for a home office or study space. The chef-inspired kitchen is a true highlight, boasting quartz countertops, premium cabinetry, a sleek backsplash, and a full stainless steel appliance package.

A separate side entrance to the basement provides excellent future development potential.

Upstairs, enjoy a cozy bonus room perfect for relaxing or entertaining, along with three generously sized bedrooms. The luxurious primary suite features a stylish double-sink ensuite. For added convenience, the upper-floor laundry room makes daily chores a breeze.

Located just steps from shopping centres and the picturesque Chestermere Lake, this home offers the ideal setting for family living.

Don't miss out—book your showing



today!

Built in 2022

Essential Information

| | |
|----------------|------------------------|
| MLS® # | A2223129 |
| Price | \$634,999 |
| Bedrooms | 3 |
| Bathrooms | 3.00 |
| Full Baths | 2 |
| Half Baths | 1 |
| Square Footage | 1,728 |
| Acres | 0.08 |
| Year Built | 2022 |
| Type | Residential |
| Sub-Type | Semi Detached |
| Style | 2 Storey, Side by Side |
| Status | Active |

Community Information

| | |
|-------------|----------------------|
| Address | 1041 Waterford Drive |
| Subdivision | Chesterview Estates |
| City | Chestermere |
| County | Chestermere |
| Province | Alberta |
| Postal Code | T1X 2P7 |

Amenities

| | |
|----------------|-------------------------------------|
| Parking Spaces | 4 |
| Parking | Double Garage Attached, Parking Pad |
| # of Garages | 2 |

Interior

| | |
|-------------------|---|
| Interior Features | Kitchen Island, No Animal Home, No Smoking Home, Open Floorplan, Pantry, Quartz Counters, Separate Entrance, Vaulted Ceiling(s) |
| Appliances | Dishwasher, Microwave Hood Fan, Refrigerator, Washer/Dryer, Gas Range |
| Heating | Forced Air, Natural Gas |
| Cooling | None |

| | |
|-----------------|----------|
| Fireplace | Yes |
| # of Fireplaces | 1 |
| Fireplaces | Electric |
| Basement | None |

Exterior

| | |
|-------------------|----------------------------|
| Exterior Features | Rain Gutters |
| Lot Description | Back Yard, Rectangular Lot |
| Roof | Asphalt Shingle |
| Construction | Wood Siding |
| Foundation | Poured Concrete |

Additional Information

| | |
|----------------|----------------|
| Date Listed | May 21st, 2025 |
| Days on Market | 27 |
| Zoning | R-3 |

Listing Details

| | |
|----------------|-------------|
| Listing Office | Real Broker |
|----------------|-------------|

Data is supplied by Pillar 9â„¢ MLSÂ® System. Pillar 9â„¢ is the owner of the copyright in its MLSÂ® System. Data is deemed reliable but is not guaranteed accurate by Pillar 9â„¢. The trademarks MLSÂ®, Multiple Listing ServiceÂ® and the associated logos are owned by The Canadian Real Estate Association (CREA) and identify the quality of services provided by real estate professionals who are members of CREA. Used under license.