

\$275,000 - 101 11 Street, Wainwright

MLS® #A2222107

\$275,000

5 Bedroom, 2.00 Bathroom, 1,120 sqft

Residential on 0.16 Acres

Wainwright, Wainwright, Alberta

Welcome to this beautifully refreshed 1,120 sq. ft. bungalow, perfect for families or investors! Featuring new paint and flooring throughout, this home is well maintained. The main floor boasts three spacious bedrooms, a bright living area, and a functional kitchen ready for your personal touch. The fully developed basement adds two additional bedrooms, offering flexibility for guests or a home office. Situated on a generous lot in a quiet, family-friendly neighborhood—this move-in-ready gem won't last long!

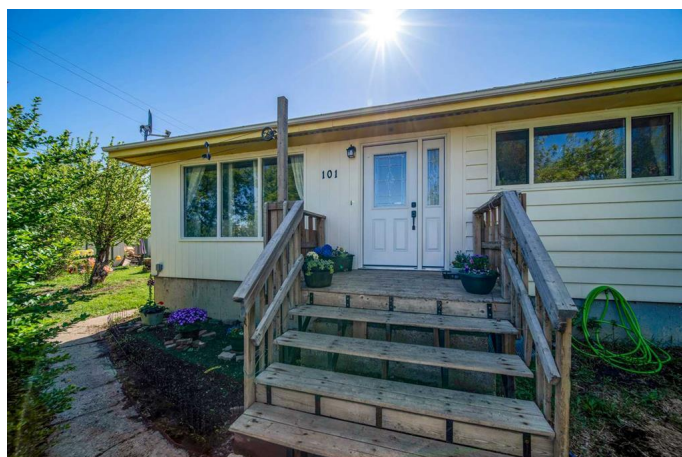
Built in 1964

Essential Information

MLS® #	A2222107
Price	\$275,000
Bedrooms	5
Bathrooms	2.00
Full Baths	2
Square Footage	1,120
Acres	0.16
Year Built	1964
Type	Residential
Sub-Type	Detached
Style	Bungalow
Status	Active

Community Information

Address 101 11 Street



Subdivision	Wainwright
City	Wainwright
County	Wainwright No. 61, M.D. of
Province	Alberta
Postal Code	T9W 1G9

Amenities

Parking Spaces	2
Parking	Off Street

Interior

Interior Features	Ceiling Fan(s)
Appliances	Dryer, Electric Stove, Refrigerator, Washer
Heating	Forced Air
Cooling	None
Has Basement	Yes
Basement	Finished, Full

Exterior

Exterior Features	Rain Gutters
Lot Description	Back Yard, Front Yard, Lawn, Treed
Roof	Asphalt Shingle
Construction	Wood Frame
Foundation	Poured Concrete

Additional Information

Date Listed	May 20th, 2025
Days on Market	34
Zoning	R3

Listing Details

Listing Office	CENTURY 21 CONNECT REALTY
----------------	---------------------------

Data is supplied by Pillar 9â„¢ MLSÂ® System. Pillar 9â„¢ is the owner of the copyright in its MLSÂ® System. Data is deemed reliable but is not guaranteed accurate by Pillar 9â„¢. The trademarks MLSÂ®, Multiple Listing ServiceÂ® and the associated logos are owned by The Canadian Real Estate Association (CREA) and identify the quality of services provided by real estate professionals who are members of CREA. Used under license.