

# **\$889,900 - #2, 710072 40 Highway, Rural Grande Prairie No. 1, County of**

---

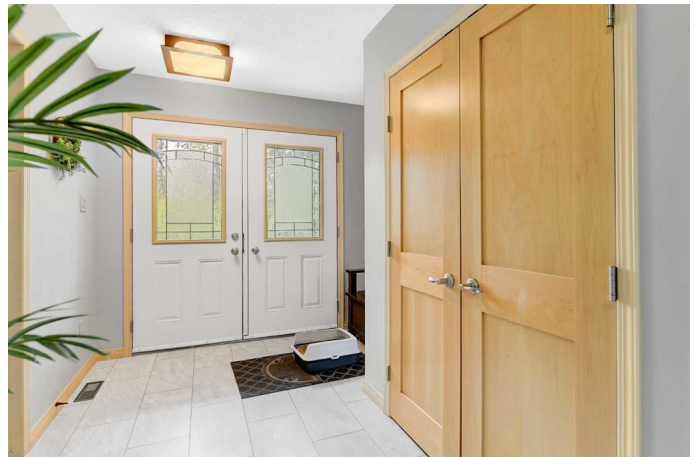
MLS® #A2221520

**\$889,900**

6 Bedroom, 4.00 Bathroom, 3,283 sqft  
Residential on 7.52 Acres

Sprucewood Park., Rural Grande Prairie No.  
1, County of, Alberta

Just one minute from city limits, this stunning 7.52-acre fully treed acreage offers an incredible blend of location, privacy, space, and upgrades—an opportunity that comes along only once in a decade. The paved driveway leads you through towering spruce trees to a beautifully manicured yard, an architecturally striking 3,228 sq ft (includes the 720 sqft converted garage space) custom home, and a massive 42' x 60' steel pole coverall shop with concrete floor—perfect for RVs, equipment, or all your toys. Inside, the home features numerous updates including quartz countertops, subway tile backsplash, new sink and fixtures in the kitchen, fresh vinyl tile flooring, new carpet, and updated paint throughout. The spacious living room opens onto a two-tier deck and a 3-season BBQ/hot tub screen room, complete with a low-maintenance, skirted saltwater hot tub on a concrete slab—perfect for year-round relaxation. Vaulted ceilings and large windows fill the main living areas with natural light, while the second level boasts a luxurious master suite with a fully renovated spa-like ensuite and a large custom theatre room. The upper level includes four generously sized bedrooms, all with new paint and flooring, plus a fully updated bathroom and a convenient Jack and Jill bathroom. Additional highlights include main floor laundry, a lower-level guest



bedroom with ample storage, and a converted 720 sq ft garage that now serves as a four-season workspace, man cave, or games room. This property must be seen to be truly appreciatedâ€”donâ€™t miss your chance to own this rare gem. County approved 2nd approach (waiting for county to put in the remainder of the approach)

Built in 1976

**Essential Information**

MLS® #	A2221520
Price	\$889,900
Bedrooms	6
Bathrooms	4.00
Full Baths	2
Half Baths	2
Square Footage	3,283
Acres	7.52
Year Built	1976
Type	Residential
Sub-Type	Detached
Style	4 Level Split, Acreage with Residence
Status	Active

**Community Information**

Address	#2, 710072 40 Highway
Subdivision	Sprucewood Park.
City	Rural Grande Prairie No. 1, County of
County	Grande Prairie No. 1, County of
Province	Alberta
Postal Code	T8W5B6

**Amenities**

Parking	Carport
---------	---------

**Interior**

Interior Features	See Remarks
-------------------	-------------

Appliances	See Remarks
Heating	Forced Air
Cooling	None
Has Basement	Yes
Basement	Finished, See Remarks

## Exterior

Exterior Features	Private Entrance, Private Yard
Lot Description	Many Trees, Private
Roof	Asphalt Shingle
Construction	See Remarks
Foundation	Poured Concrete

## Additional Information

Date Listed	May 15th, 2025
Days on Market	37
Zoning	CR4

## Listing Details

Listing Office	Sutton Group Grande Prairie Professionals
----------------	-------------------------------------------

Data is supplied by Pillar 9â„¢ MLS® System. Pillar 9â„¢ is the owner of the copyright in its MLS® System. Data is deemed reliable but is not guaranteed accurate by Pillar 9â„¢. The trademarks MLS®, Multiple Listing Service® and the associated logos are owned by The Canadian Real Estate Association (CREA) and identify the quality of services provided by real estate professionals who are members of CREA. Used under license.