

# \$799,900 - 683 Strathcona Drive Sw, Calgary

MLS® #A2214521

**\$799,900**

4 Bedroom, 3.00 Bathroom, 1,997 sqft

Residential on 0.11 Acres

Strathcona Park, Calgary, Alberta

Now's your chance to get into Strathcona Park! This spacious 4 level split home is move-in ready, with all of the biggest maintenance items taken care of... New roof and HWT in 2023, plus a new kitchen and bathrooms and bedroom windows last year. Exceptional location just steps to the ravine, walking distance to C-Train and schools. Classic layout with sunken family room with wood fireplace, and a main floor office/bedroom. Your family will thrive here!

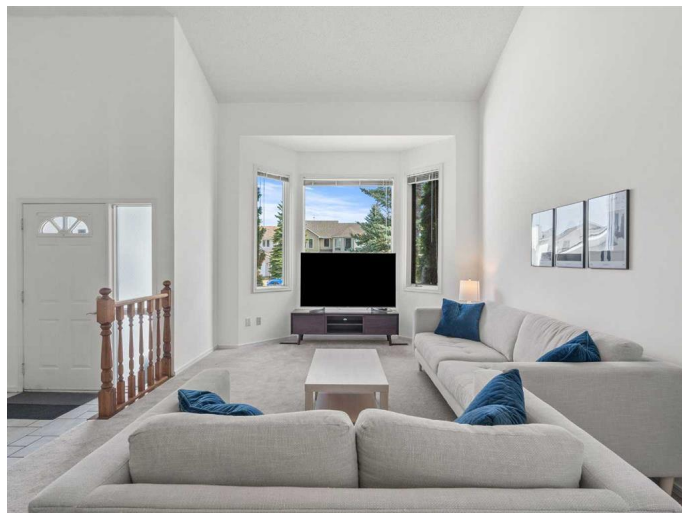
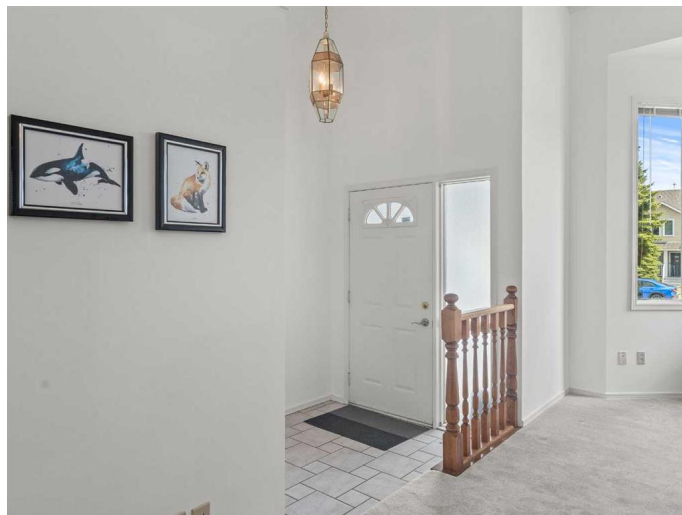
Built in 1985

## Essential Information

MLS® #	A2214521
Price	\$799,900
Bedrooms	4
Bathrooms	3.00
Full Baths	2
Half Baths	1
Square Footage	1,997
Acres	0.11
Year Built	1985
Type	Residential
Sub-Type	Detached
Style	4 Level Split
Status	Active

## Community Information

Address 683 Strathcona Drive Sw



Subdivision	Strathcona Park
City	Calgary
County	Calgary
Province	Alberta
Postal Code	T3H 1P2

### Amenities

Parking Spaces	4
Parking	Concrete Driveway, Double Garage Attached, Garage Faces Front
# of Garages	2

### Interior

Interior Features	Built-in Features, Ceiling Fan(s), No Smoking Home, Vinyl Windows
Appliances	Dishwasher, Dryer, Electric Stove, Refrigerator, Washer, Window Coverings
Heating	Fireplace(s), Forced Air, Natural Gas
Cooling	None
Fireplace	Yes
# of Fireplaces	1
Fireplaces	Brick Facing, Family Room, Mantle, Wood Burning
Has Basement	Yes
Basement	Finished, Partial

### Exterior

Exterior Features	None
Lot Description	Fruit Trees/Shrub(s), Landscaped, Level
Roof	Asphalt Shingle
Construction	Stucco, Wood Frame
Foundation	Poured Concrete

### Additional Information

Date Listed	April 24th, 2025
Days on Market	6
Zoning	R-CG

### Listing Details

Listing Office	Real Broker
----------------	-------------

Data is supplied by Pillar 9â„¢ MLSÂ® System. Pillar 9â„¢ is the owner of the copyright in its MLSÂ® System. Data is deemed reliable but is not guaranteed accurate by Pillar 9â„¢. The trademarks MLSÂ®, Multiple Listing ServiceÂ® and the associated logos are owned by The Canadian Real Estate Association (CREA) and identify the quality of services

