

\$1,369,900 - 5 Eaton Terrace, Rural Rocky View County

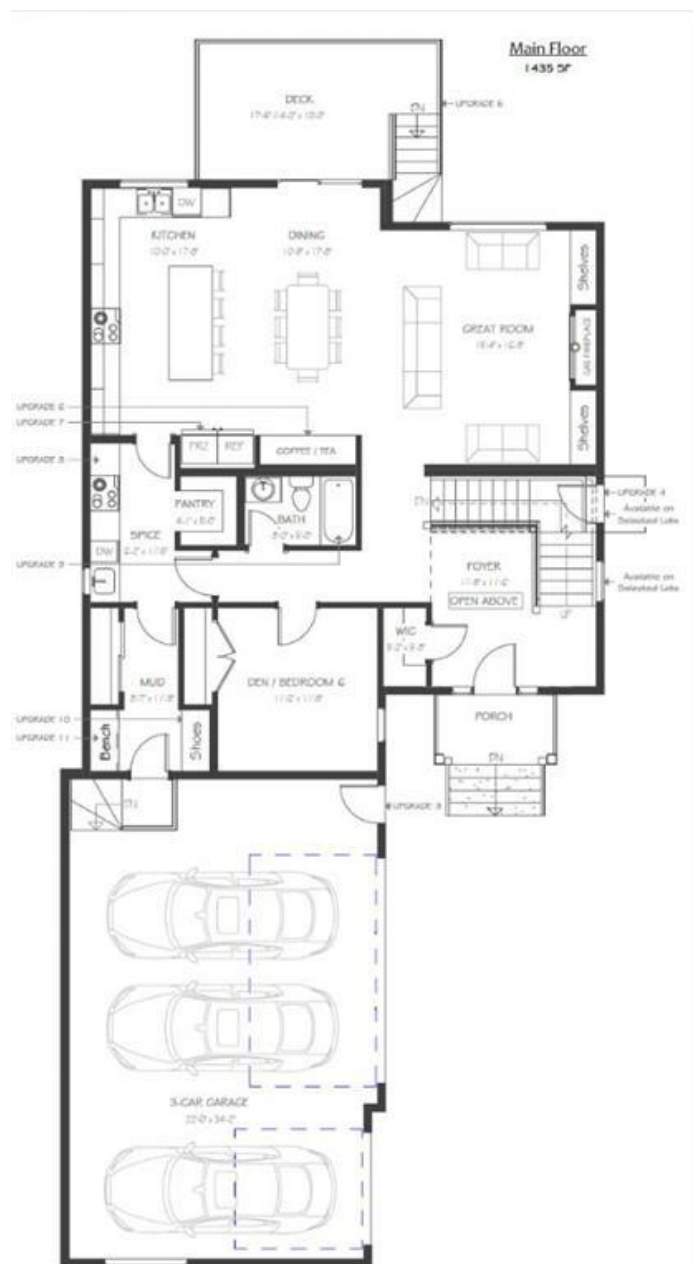
MLS® #A2213619

\$1,369,900

5 Bedroom, 4.00 Bathroom, 3,203 sqft
Residential on 0.14 Acres

Cambridge Park, Rural Rocky View County,
Alberta

Welcome to the brand new development of Knightsbridge in Cambridge Park. The Whitehaven is a stunning estate home designed to blend luxury and practicality. Set on a generous 6027 sq ft lot, this home provides an expansive backyard and a side-drive triple car garage. These are not your typical cookie cutter homes. With 3,203 sq ft of living space, this custom-built masterpiece features 5 spacious bedrooms and 4 beautifully designed bathrooms, offering ample room for family and guests. This home is loaded with upgrades including: Main floor full bath, Jack and Jill ensuites for added convenience, High ceilings & a Spice kitchen to enhance your culinary experiences. Inside, the main floor exudes elegance with rich hardwood flooring and 9 ft ceilings with 8 ft doors, and striking black-framed windows that invite natural light. The gourmet kitchen is a chef's dream, complete with an oversized island, a secondary spice kitchen, sleek stainless steel appliances. An open concept formal dining and living area set the stage for gatherings. The main floor also includes a flex room as well as a 4 pc bathroom. The primary suite on the upper floors is a true sanctuary with a freestanding tub and a custom-built closet. The home's thoughtful design continues with 3 more generous sized bedrooms on the second floor, a bonus room for entertaining, a Jack & Jill ensuite bathroom for convenience, as well as a second floor



laundry room. . Step outside to enjoy a completed rear deck with steps leading to a private outdoor oasis. This home also offers a triple attached garage allowing plenty of space for extra parking. This community is within minutes to Calgary, Chestermere, and East Hills, 18 minutes to Downtown Calgary, and provides quick access to Stoney Trail, Highway 1, and McKnight Blvd making it easy to get anywhere in and around the city. Located near shopping centres, public and private schools, Khalsa school's, parks, and many other amenities, while still offering quiet country-living with wide open green spaces, walking paths, and playgrounds.

Built in 2026

Essential Information

MLS® #	A2213619
Price	\$1,369,900
Bedrooms	5
Bathrooms	4.00
Full Baths	4
Square Footage	3,203
Acres	0.14
Year Built	2026
Type	Residential
Sub-Type	Detached
Style	2 Storey
Status	Active

Community Information

Address	5 Eaton Terrace
Subdivision	Cambridge Park
City	Rural Rocky View County
County	Rocky View County
Province	Alberta
Postal Code	T1Z 0A1

Amenities

Amenities	Other
Parking Spaces	6
Parking	Triple Garage Attached
# of Garages	3

Interior

Interior Features	Open Floorplan
Appliances	Dishwasher, Gas Range, Ref
Heating	Forced Air
Cooling	None
Fireplace	Yes
# of Fireplaces	1
Fireplaces	Gas
Has Basement	Yes
Basement	Full, Unfinished

Exterior

Exterior Features	Other
Lot Description	Rectangular Lot
Roof	Asphalt Shingle
Construction	Cement Fiber Board, Concrete, wood frame
Foundation	Poured Concrete

Additional Information

Date Listed	April 21st, 2025
Days on Market	63
Zoning	R-1
HOA Fees	100
HOA Fees Freq.	MON

Listing Details

Listing Office	Greater Property Group
----------------	------------------------

Data is supplied by Pillar 9â„¢ MLS® System. Pillar 9â„¢ is the owner of the copyright in its MLS® System. Data is deemed reliable but is not guaranteed accurate by Pillar 9â„¢. The trademarks MLS®, Multiple Listing Service® and the associated logos are owned by The Canadian Real Estate Association (CREA) and identify the quality of services provided by real estate professionals who are members of CREA. Used under license.

