

\$695,000 - 1320 7 Avenue E, Drumheller

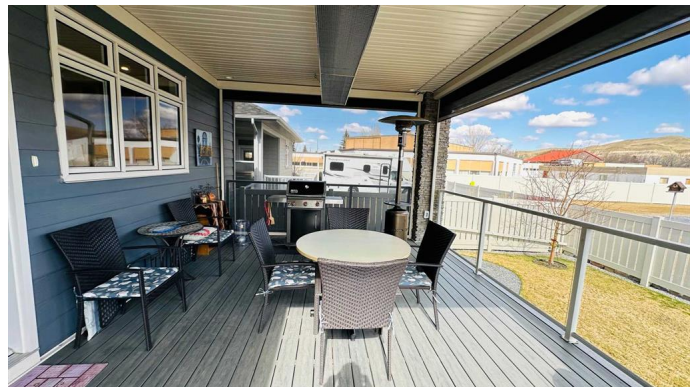
MLS® #A2212802

\$695,000

3 Bedroom, 3.00 Bathroom, 1,601 sqft
Residential on 0.13 Acres

Riverview Park, Drumheller, Alberta

TRULY SPECTACULAR CUSTOM BUILT FULLY DEVELOPED BUNGALOW IN HIGHLY DESIRED RIVERSIDE ESTATES 55 PLUS SUBDIVISION If a low maintenance worry free lifestyle is what you're looking for, then look no further as you have found it in the fabulous new 55 plus subdivision of Riverside Estates!!! With the home owners association and monthly fee (\$150), your yearly yard maintenance and snow removal is all looked after!!! When it comes to this immaculate custom built 1,601 sqft bungalow, it might just be love at first sight!!! Built in 2017 this meticulously kept bungalow features 3 bedrooms total including stunning primary suite with gorgeous 5 pce ensuite featuring a walk in jetted tub/shower and large walk in closet, 2 1/2 bathrooms, spacious living room featuring stunning vinyl plank flooring, 9ft ceilings and electric fireplace plus an absolutely breathtaking kitchen showcasing quartz counter tops, large island and an abundance of cabinets and counter space, main floor laundry, central air, central vac, 8 appliances, fully developed basement with large family room and kitchen/wet bar ideal for entertaining family and friends and to top it all off an attached double car heated garage with beautiful polyaspartic finished floor!!! Outside you will be sure to enjoy your underground sprinkler system along with an amazing partially covered maintenance free rear deck featuring radiant heat, natural gas hook up and retractable electric screens to help you enjoy



your privacy and relaxation!!! All on a well landscaped 5,699 sqft fenced lot in very popular Riverside one of Drumheller's most highly desired locations, with park and gazebo in behind!!! ***With the home owners association this one of a kind subdivision gives you the freedom to enjoy the summers in the beautiful Drumheller valley and winters away if you so desire***

Built in 2017

Essential Information

MLS® #	A2212802
Price	\$695,000
Bedrooms	3
Bathrooms	3.00
Full Baths	2
Half Baths	1
Square Footage	1,601
Acres	0.13
Year Built	2017
Type	Residential
Sub-Type	Detached
Style	Bungalow
Status	Active

Community Information

Address	1320 7 Avenue E
Subdivision	Riverview Park
City	Drumheller
County	Drumheller
Province	Alberta
Postal Code	T0J 0Y5

Amenities

Amenities	Snow Removal
Parking Spaces	4
Parking	Concrete Driveway, Double Garage Attached, Garage Faces Front,

	Heated Garage, Insulated, Garage Door Opener
# of Garages	2

Interior

Interior Features	Central Vacuum, Double Vanity, High Ceilings, Kitchen Island, No Animal Home, No Smoking Home, Open Floorplan, Quartz Counters, Recessed Lighting, See Remarks, Soaking Tub, Storage, Walk-In Closet(s), Wet Bar, Bookcases, Built-in Features, Solar Tube(s)
Appliances	Built-In Oven, Dishwasher, Dryer, Electric Cooktop, Garage Control(s), Microwave, Refrigerator, Washer, Window Coverings
Heating	Forced Air, Natural Gas
Cooling	Central Air
Fireplace	Yes
# of Fireplaces	1
Fireplaces	Electric, Great Room, None
Has Basement	Yes
Basement	Finished, Full

Exterior

Exterior Features	Other
Lot Description	Back Yard, Landscaped, Standard Shaped Lot, Underground Sprinklers, Backs on to Park/Green Space, Street Lighting
Roof	Asphalt Shingle
Construction	Stone, Other
Foundation	Poured Concrete

Additional Information

Date Listed	April 20th, 2025
Days on Market	60
Zoning	ND
HOA Fees	150
HOA Fees Freq.	MON

Listing Details

Listing Office	Royal LePage Wildrose Real Estate-Drumheller
----------------	--

Data is supplied by Pillar 9â„¢ MLSÂ® System. Pillar 9â„¢ is the owner of the copyright in its MLSÂ® System. Data is deemed reliable but is not guaranteed accurate by Pillar 9â„¢. The trademarks MLSÂ®, Multiple Listing ServiceÂ® and the associated logos are owned by The Canadian Real Estate Association (CREA) and identify the quality of services provided by real estate professionals who are members of CREA. Used under license.