

\$665,000 - Range Road 285, Rural Rocky View County

MLS® #A2210998

\$665,000

0 Bedroom, 0.00 Bathroom,
Land on 8.92 Acres

NONE, Rural Rocky View County, Alberta

Great opportunity to buy 8.92 Acres of vacant land just half mile East of Airdrie City Limits. Very nice Mountain view to the west, Prairie view to the East. Only 20 minutes drive to Calgary Airport and less than 15 minutes to CrossIron Mill Mall. Zoned R-RUR with well on it & ready to build your dream home.

Essential Information

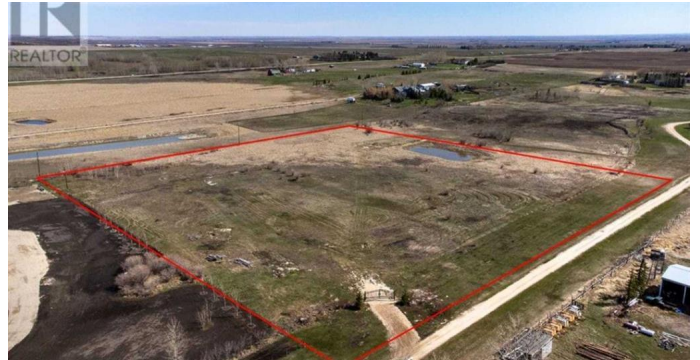
MLS® #	A2210998
Price	\$665,000
Bathrooms	0.00
Acres	8.92
Type	Land
Sub-Type	Residential Land
Status	Active

Community Information

Address	Range Road 285
Subdivision	NONE
City	Rural Rocky View County
County	Rocky View County
Province	Alberta
Postal Code	T4A 2S7

Additional Information

Date Listed	April 11th, 2025
Days on Market	70
Zoning	R-RUR



Listing Details

Listing Office Five Star Realty

Data is supplied by Pillar 9â„¢ MLS® System. Pillar 9â„¢ is the owner of the copyright in its MLS® System. Data is deemed reliable but is not guaranteed accurate by Pillar 9â„¢. The trademarks MLS®, Multiple Listing Service® and the associated logos are owned by The Canadian Real Estate Association (CREA) and identify the quality of services provided by real estate professionals who are members of CREA. Used under license.