

\$225,000 - 3913 50 Avenue, Sylvan Lake

MLS® #A2205959

\$225,000

0 Bedroom, 0.00 Bathroom,
Land on 0.09 Acres

Cottage Area, Sylvan Lake, Alberta

Fantastic location within 1 block of the Boardwalk on Sylvan Lake , this 30 by 130 lot awaits your home building dreams in this highly desirable Cottage Area District.

Essential Information

MLS® #	A2205959
Price	\$225,000
Bathrooms	0.00
Acres	0.09
Type	Land
Sub-Type	Residential Land
Status	Active

Community Information

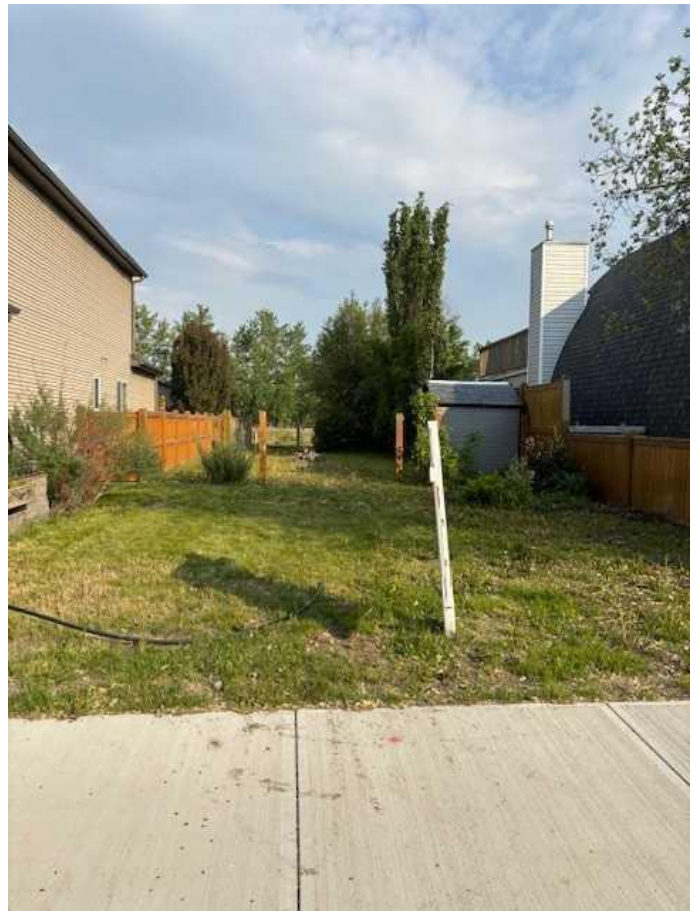
Address	3913 50 Avenue
Subdivision	Cottage Area
City	Sylvan Lake
County	Red Deer County
Province	Alberta
Postal Code	T4S 1B7

Exterior

Lot Description	Back Lane, Cleared, Level, Seasonal Water
-----------------	---

Additional Information

Date Listed	March 27th, 2025
Days on Market	86
Zoning	R5



Listing Details

Listing Office RE/MAX real estate central alberta

Data is supplied by Pillar 9â„¢ MLS® System. Pillar 9â„¢ is the owner of the copyright in its MLS® System. Data is deemed reliable but is not guaranteed accurate by Pillar 9â„¢. The trademarks MLS®, Multiple Listing Service® and the associated logos are owned by The Canadian Real Estate Association (CREA) and identify the quality of services provided by real estate professionals who are members of CREA. Used under license.