

\$155,000 - 9, 715049 Range Road 40, Rural Grande Prairie No. 1, County of

MLS® #A2205483

\$155,000

0 Bedroom, 0.00 Bathroom,
Land on 3.72 Acres

NONE, Rural Grande Prairie No. 1, County of,
Alberta

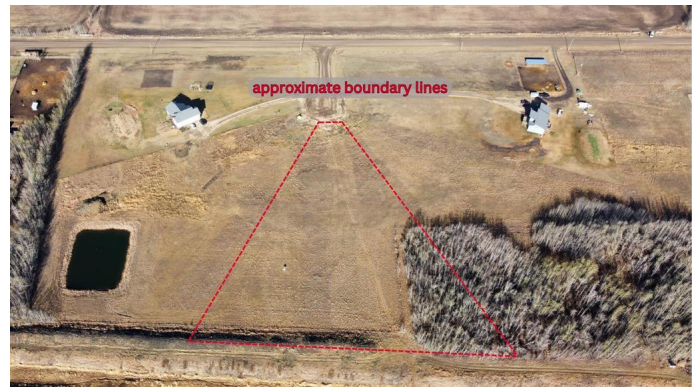
One of three adjoining vacant lots for sale in a 5-lot subdivision located less than 1km off the paved HWY 670 in the Glen Leslie area, just 15 minutes east of Grande Prairie. Buy the lot, pick your plan, and choose your own builder. Approaches are in and power and gas are already on the lot. Lot 9 is 3.72 acres and backs onto Kleskun Creek. And with a lot for sale on each side of this lot, you could buy two and double up your land size or have your friend or family member purchase a property too so you can know who your neighbors will be! Lots are zoned CR-2. Take a drive out and have a look or contact your favorite Real Estate Professional for more information.

Essential Information

MLS® #	A2205483
Price	\$155,000
Bathrooms	0.00
Acres	3.72
Type	Land
Sub-Type	Residential Land
Status	Active

Community Information

Address	9, 715049 Range Road 40
Subdivision	NONE



City	Rural Grande Prairie No. 1, County of
County	Grande Prairie No. 1, County of
Province	Alberta
Postal Code	T8X 4C2

Additional Information

Date Listed	March 25th, 2025
Days on Market	99
Zoning	CR-2

Listing Details

Listing Office	Royal LePage - The Realty Group
----------------	---------------------------------

Data is supplied by Pillar 9â„¢ MLS® System. Pillar 9â„¢ is the owner of the copyright in its MLS® System. Data is deemed reliable but is not guaranteed accurate by Pillar 9â„¢. The trademarks MLS®, Multiple Listing Service® and the associated logos are owned by The Canadian Real Estate Association (CREA) and identify the quality of services provided by real estate professionals who are members of CREA. Used under license.