

\$80,000 - 138, 67458 Mcgrane Road, Lac La Biche

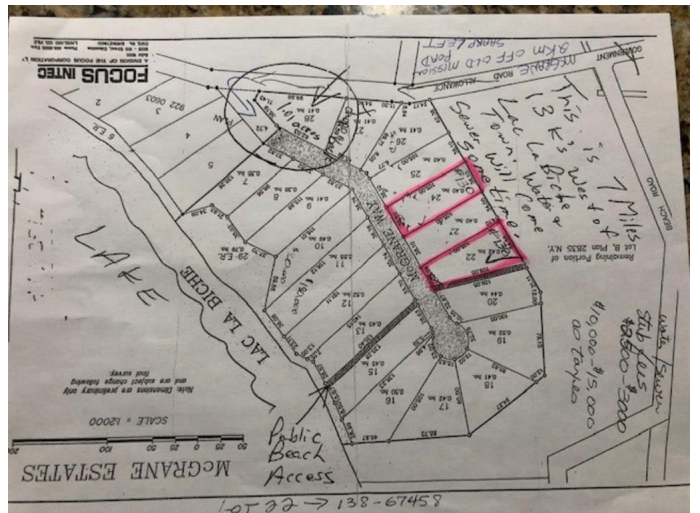
MLS® #A2205127

\$80,000

0 Bedroom, 0.00 Bathroom,
Land on 1.04 Acres

NONE, Lac La Biche, Alberta

McGrane estates is a subdivision on the south side of Lac La biche lake close to the Mission beach. There is access to the lake with a community path, come enjoy the weekend recreation. With the upwards slope of the lot, a walk out cottage with second floor would grant you views of the lake. the lot has been opened up and been mulched, ready to fully develop. Municipal water and sewer is now available at this lot, so living here would be a breeze!



Essential Information

| | |
|-----------|------------------|
| MLS® # | A2205127 |
| Price | \$80,000 |
| Bathrooms | 0.00 |
| Acres | 1.04 |
| Type | Land |
| Sub-Type | Residential Land |
| Status | Active |

Community Information

| | |
|-------------|-------------------------|
| Address | 138, 67458 Mcgrane Road |
| Subdivision | NONE |
| City | Lac La Biche |
| County | Lac La Biche County |
| Province | Alberta |
| Postal Code | T0A 2C0 |

Amenities

| | |
|------------|--|
| Utilities | Electricity at Lot Line, Natural Gas at Lot Line, Sewer Available, Water Available |
| Waterfront | Lake |

Exterior

| | |
|-----------------|--|
| Lot Description | Backs on to Park/Green Space, Gentle Sloping, Lake |
|-----------------|--|

Additional Information

| | |
|----------------|------------------|
| Date Listed | March 23rd, 2025 |
| Days on Market | 90 |
| Zoning | CR |

Listing Details

| | |
|----------------|-------------------|
| Listing Office | People 1st Realty |
|----------------|-------------------|

Data is supplied by Pillar 9â„¢ MLSÂ® System. Pillar 9â„¢ is the owner of the copyright in its MLSÂ® System. Data is deemed reliable but is not guaranteed accurate by Pillar 9â„¢. The trademarks MLSÂ®, Multiple Listing ServiceÂ® and the associated logos are owned by The Canadian Real Estate Association (CREA) and identify the quality of services provided by real estate professionals who are members of CREA. Used under license.