

# \$24 - 50 61027 Highway, Rural Grande Prairie No. 1, County of

MLS® #A2203493

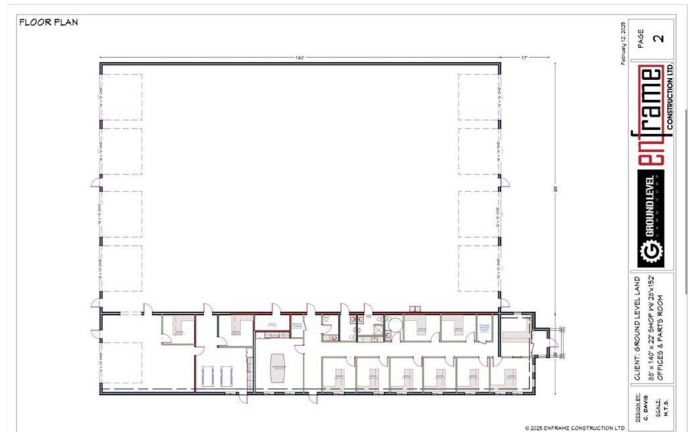
**\$24**

0 Bedroom, 0.00 Bathroom,  
Commercial on 9.05 Acres

Emerson Trail Industrial Park, Rural Grande Prairie No. 1, County of, Alberta

## PRE-CONSTRUCTION LEASE

**OPPORTUNITY.** Introducing the opportunity to create the exact yard, shop & logistics you have been looking for. Ultimate flexibility to design/construct the facility that will best fit your operations. Current listing offers a 16,000+ sq.ft. Building on 9.05 acre site with 5+/- acres of developed yard space and the option to expand now or later into the additional 4+/- acres. Proposed building layout is as follows: 12,320sq.ft. of shop space including FOUR 140'™ drive-thru bays with 18'™ O.H.D.'™s + 4256sq.ft. of office & shop support area including 8 offices, boardroom, locker room, parts area. Keep in mind the shop & office areas can be purpose built to fit your exact needs. Start to finish construction time on this property can be in the 6-8 month range. The Emerson Trail Industrial area offers great access with paved roads right to your property line, easy highway access in all directions which can help service your clients needs all over the Peace Country. If you need more shop and more land we can make that happen, if you need less shop and more land we can make that happen. No concept won't be looked at, bring your ideas and let's make them a reality. Quality RM-2 zoned properties are in high demand and this rare option allows you full customization to fit your operations. This



project is also for sale @ \$4,400,000.00. Call a Commercial Realtor today for additional information and letâ€™s build something together.

Built in 2025

**Essential Information**

MLS® #	A2203493
Price	\$24
Bathrooms	0.00
Acres	9.05
Year Built	2025
Type	Commercial
Sub-Type	Industrial
Status	Active

**Community Information**

Address	50 61027 Highway
Subdivision	Emerson Trail Industrial Park
City	Rural Grande Prairie No. 1, County of
County	Grande Prairie No. 1, County of
Province	Alberta
Postal Code	T0H 3C0

**Additional Information**

Date Listed	March 19th, 2025
Days on Market	95
Zoning	RM-2

**Listing Details**

Listing Office	RE/MAX Grande Prairie
----------------	-----------------------

Data is supplied by Pillar 9â„¢ MLS® System. Pillar 9â„¢ is the owner of the copyright in its MLS® System. Data is deemed reliable but is not guaranteed accurate by Pillar 9â„¢. The trademarks MLS®, Multiple Listing Service® and the associated logos are owned by The Canadian Real Estate Association (CREA) and identify the quality of services provided by real estate professionals who are members of CREA. Used under license.