

\$419,900 - #1, 200 Parkview Crescent W, Bow Island

MLS® #A2194254

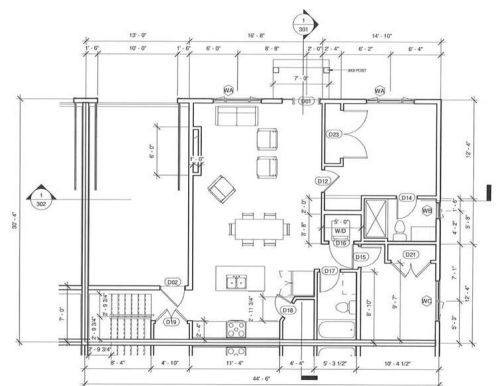
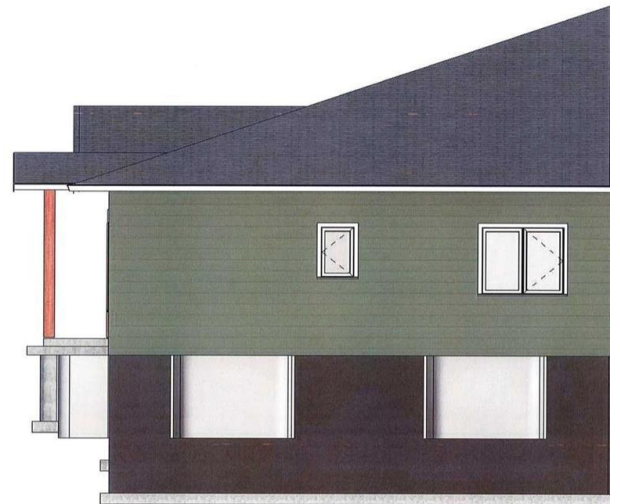
\$419,900

2 Bedroom, 2.00 Bathroom, 1,070 sqft

Residential on 0.06 Acres

NONE, Bow Island, Alberta

BRAND NEW, low-maintenance living in the new Parkview Crescent with NO CONDO FEES and the additional bonus of a \$7500 property tax credit with the Town of Bow Island!! Welcome to Parkview Crescent, Bow Island's newest subdivision, where modern design meets small-town comfort. This brand-new 1070 sq. ft. home is one unit in a JAYCO built four-plex, offering an efficient, low-maintenance lifestyle with no condo fees - perfect for seniors looking to downsize or young families starting out. Inside, the open-concept main floor features a bright living space with a stylish electric fireplace, a spacious kitchen and a dining area designed for easy living. With two bedrooms on the main floor, including a primary suite with a 4-piece ensuite, comfort and convenience come standard. Laundry can be on the main floor or in the basement, depending on your preference. This home also features: ICF Foundation for energy efficiency and durability, Attached heated single garage for year-round comfort, Undeveloped basement ready for your personal touch, Optional appliance package available at an additional cost. Estimated completion date is September 30 when you can move in and enjoy the ease of a brand-new home in a fantastic location.



Built in 2025

Essential Information

MLS® #	A2194254
Price	\$419,900
Bedrooms	2
Bathrooms	2.00
Full Baths	2
Square Footage	1,070
Acres	0.06
Year Built	2025
Type	Residential
Sub-Type	Row/Townhouse
Style	Bungalow
Status	Active

Community Information

Address	#1, 200 Parkview Crescent W
Subdivision	NONE
City	Bow Island
County	Forty Mile No. 8, County of
Province	Alberta
Postal Code	T0K 0G0

Amenities

Parking Spaces	2
Parking	Off Street, Single Garage Attached
# of Garages	1

Interior

Interior Features	Kitchen Island, Pantry
Appliances	None
Heating	Forced Air
Cooling	Central Air
Fireplace	Yes
# of Fireplaces	1
Fireplaces	Electric
Has Basement	Yes
Basement	Full, Unfinished

Exterior

Exterior Features	None
-------------------	------

Lot Description	Corner Lot, Front Yard
Roof	Asphalt Shingle
Construction	ICFs (Insulated Concrete Forms), Wood Frame
Foundation	Poured Concrete, See Remarks

Additional Information

Date Listed	February 12th, 2025
Days on Market	126
Zoning	R-1

Listing Details

Listing Office	RE/MAX MEDALTA REAL ESTATE
----------------	----------------------------

Data is supplied by Pillar 9â„¢ MLS® System. Pillar 9â„¢ is the owner of the copyright in its MLS® System. Data is deemed reliable but is not guaranteed accurate by Pillar 9â„¢. The trademarks MLS®, Multiple Listing Service® and the associated logos are owned by The Canadian Real Estate Association (CREA) and identify the quality of services provided by real estate professionals who are members of CREA. Used under license.