

\$195,000 - Lot 3, Range Road 84 Township Road 722, Wembley

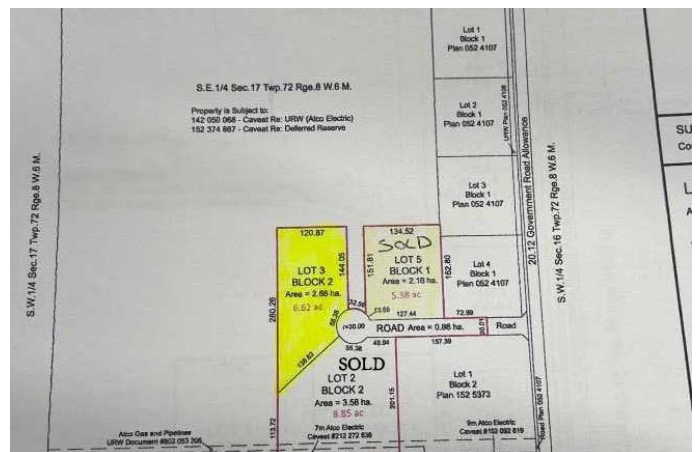
MLS® #A2187592

\$195,000

0 Bedroom, 0.00 Bathroom,
Land on 6.62 Acres

NONE, Wembley, Alberta

Welcome to your dream retreat in the serene Wembley area, where nature's beauty meets endless possibilities. Nestled within a picturesque landscape, this enchanting treed acreage spans an impressive 6.62 acres, providing you with ample space to create the lifestyle you've always envisioned. Just 25 minutes away from the bustling city, this secluded oasis offers the perfect balance between tranquility and convenience. Imagine escaping the urban hustle and embracing the peaceful ambiance as you immerse yourself in the lush surroundings of your own private sanctuary. Zoned CR5, this lot presents a world of potential! With a permitted county of Grande Prairie use for residential home, accessory building, manufactured home, detached dwelling, and more, you have the freedom to design and construct your ideal living space without any building commitment! The canvas is yours to paint, limited only by your imagination. The lot is plus GST and has power to property line. Don't miss this extraordinary opportunity to own a piece of paradise. Contact your trusted REALTOR® today to unlock the door to your future. Your dream acreage is just a phone call away!



Essential Information

MLS® # A2187592

Price	\$195,000
Bathrooms	0.00
Acres	6.62
Type	Land
Sub-Type	Residential Land
Status	Active

Community Information

Address	Lot 3, Range Road 84 Township Road 722
Subdivision	NONE
City	Wembley
County	Grande Prairie No. 1, County of
Province	Alberta
Postal Code	T0H 2J0

Additional Information

Date Listed	February 3rd, 2025
Days on Market	148
Zoning	CR-5

Listing Details

Listing Office	RE/MAX Grande Prairie
----------------	-----------------------

Data is supplied by Pillar 9â„¢ MLS® System. Pillar 9â„¢ is the owner of the copyright in its MLS® System. Data is deemed reliable but is not guaranteed accurate by Pillar 9â„¢. The trademarks MLS®, Multiple Listing Service® and the associated logos are owned by The Canadian Real Estate Association (CREA) and identify the quality of services provided by real estate professionals who are members of CREA. Used under license.