

\$862,750 - 210 Belich Court, Rural Red Deer County

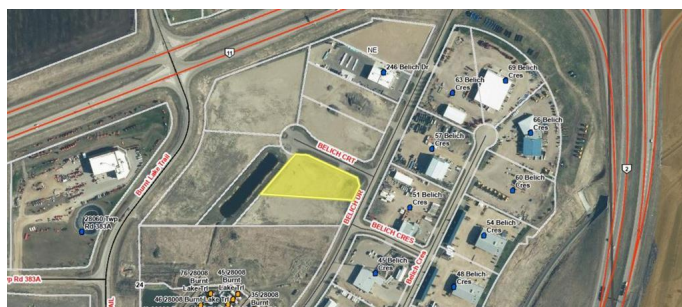
MLS® #A2155857

\$862,750

0 Bedroom, 0.00 Bathroom,
Land on 2.03 Acres

Belich Business Park, Rural Red Deer County,
Alberta

The PERFECT Location to build your business on with 2.03 Acres on Hwy 11 just before Queen E 11! BSI Zoning and amazing exposure! Solid ground and all services at lot line. BSI Zoning allows for An amazing number of different type of business's from Automotive, Contracting, Food and Beverage, Training Facilities, Kennel's, Lease Bays, Commercial Rental Units, Oilfield Service or Supply, Outdoor Storage Facilities, Retail Sales, Solar Energy, Manufactured Home Sales, Vet Clinic, Digressionary Uses include: Automotive or RV Sales, Cannabis Production, EMS, Heavy Equipment Sales/Rental, Indoor Shooting Range, Manufacturing/Processing or Assembly Facility, Warehousing and Storage, Security - Operator Residential Unit. This is the perfect spot to build your business!



Essential Information

MLS® #	A2155857
Price	\$862,750
Bathrooms	0.00
Acres	2.03
Type	Land
Sub-Type	Commercial Land
Status	Active

Community Information

Address	210 Belich Court
Subdivision	Belich Business Park
City	Rural Red Deer County
County	Red Deer County
Province	Alberta
Postal Code	T4S 2K5

Additional Information

Date Listed	August 7th, 2024
Days on Market	314
Zoning	BSI

Listing Details

Listing Office	Realty Executives Alberta Elite
----------------	---------------------------------

Data is supplied by Pillar 9â„¢ MLSÂ® System. Pillar 9â„¢ is the owner of the copyright in its MLSÂ® System. Data is deemed reliable but is not guaranteed accurate by Pillar 9â„¢. The trademarks MLSÂ®, Multiple Listing ServiceÂ® and the associated logos are owned by The Canadian Real Estate Association (CREA) and identify the quality of services provided by real estate professionals who are members of CREA. Used under license.