

\$159,000 - 509 2 Avenue crescent, Wainwright

MLS® #A2127865

\$159,000

3 Bedroom, 1.00 Bathroom, 912 sqft

Residential on 0.13 Acres

Wainwright, Wainwright, Alberta

Nestled in a serene setting, this meticulously maintained 912 sq. ft. manufactured home offers cozy living. With a fully fenced yard, it provides privacy and security. Inside, discover 3 inviting bedrooms, alongside a newly renovated bathroom/laundry room, blending convenience and style. The spacious kitchen and living room areas create an ideal space for relaxation and gatherings. Embrace comfort and functionality in this charming abode, perfect for those seeking a peaceful retreat.

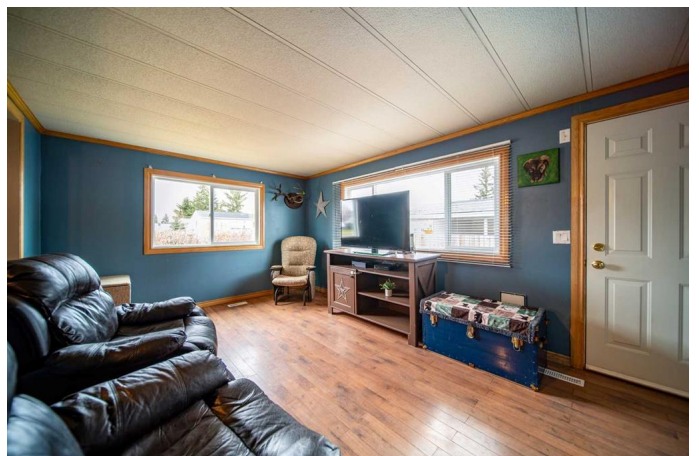
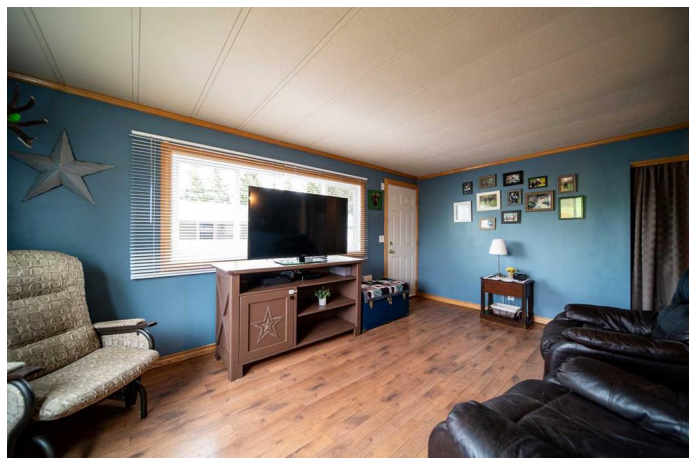
Built in 1976

Essential Information

MLS® #	A2127865
Price	\$159,000
Bedrooms	3
Bathrooms	1.00
Full Baths	1
Square Footage	912
Acres	0.13
Year Built	1976
Type	Residential
Sub-Type	Detached
Style	Mobile
Status	Active

Community Information

Address	509 2 Avenue crescent
Subdivision	Wainwright



City	Wainwright
County	Wainwright No. 61, M.D. of
Province	Alberta
Postal Code	T9W 1A3

Amenities

Parking Spaces	2
Parking	Gravel Driveway, Parking Pad
# of Garages	2

Interior

Interior Features	Ceiling Fan(s), Laminate Counters
Appliances	Dishwasher, Dryer, Refrigerator, Stove(s), Washer
Heating	Forced Air, Natural Gas
Cooling	None
Basement	None

Exterior

Exterior Features	None
Lot Description	Back Yard, Front Yard, Lawn
Roof	Asphalt Shingle
Construction	Wood Frame
Foundation	Piling(s)

Additional Information

Date Listed	May 1st, 2024
Days on Market	418
Zoning	RMH-1

Listing Details

Listing Office	CENTURY 21 CONNECT REALTY
----------------	---------------------------

Data is supplied by Pillar 9â„¢ MLS® System. Pillar 9â„¢ is the owner of the copyright in its MLS® System. Data is deemed reliable but is not guaranteed accurate by Pillar 9â„¢. The trademarks MLS®, Multiple Listing Service® and the associated logos are owned by The Canadian Real Estate Association (CREA) and identify the quality of services provided by real estate professionals who are members of CREA. Used under license.