

\$84,900 - 1, 15015 Township Road 424 Township, Rural Ponoka County

MLS® #A2088768

\$84,900

0 Bedroom, 0.00 Bathroom,
Land on 2.03 Acres

NONE, Rural Ponoka County, Alberta

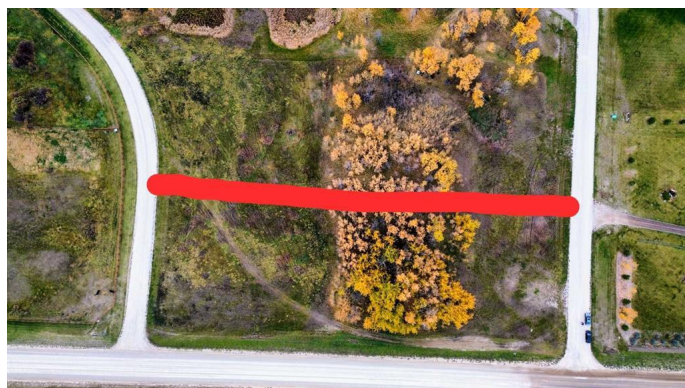
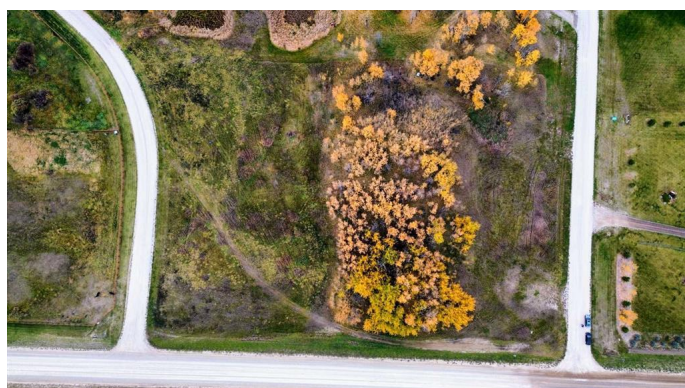
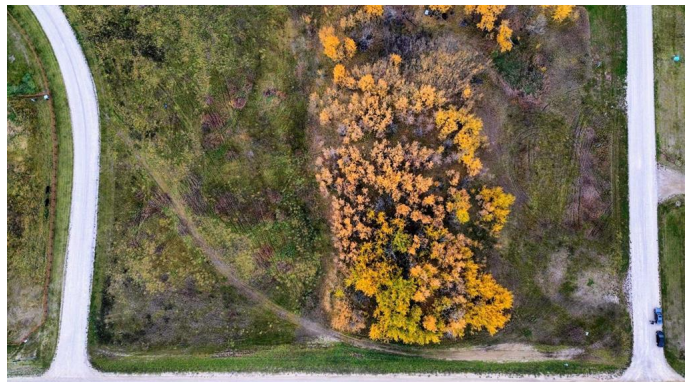
2-acre lot located just east of Rimbey! Close to the Hospital, boating, and golf. This property is well-treed and private with room for a horse. Very close to Rimbey and Gull Lake, but plenty of space away from the big cities while still able to enjoy a friendly neighborhood atmosphere. Build your dream home and get some fresh air! These lots are not currently hooked up to utilities, but utility lines are located right near the lot for easy hook-up. Township Rd 424 has been pre-approved for pavement from the County and should be expected in the near future.

Essential Information

MLS® #	A2088768
Price	\$84,900
Bathrooms	0.00
Acres	2.03
Type	Land
Sub-Type	Residential Land
Status	Active

Community Information

Address	1, 15015 Township Road 424 Township
Subdivision	NONE
City	Rural Ponoka County
County	Ponoka County



Province	Alberta
Postal Code	T0B 0H0

Additional Information

Date Listed	October 23rd, 2023
Days on Market	603
Zoning	3

Listing Details

Listing Office	Coldwell Banker Ontrack Realty
----------------	--------------------------------

Data is supplied by Pillar 9â„¢ MLS® System. Pillar 9â„¢ is the owner of the copyright in its MLS® System. Data is deemed reliable but is not guaranteed accurate by Pillar 9â„¢. The trademarks MLS®, Multiple Listing Service® and the associated logos are owned by The Canadian Real Estate Association (CREA) and identify the quality of services provided by real estate professionals who are members of CREA. Used under license.