

# \$59,000 - 5-23-52-20 Nw, Rural Yellowhead County

MLS® #A1221557

**\$59,000**

0 Bedroom, 0.00 Bathroom,  
Land on 7.50 Acres

NONE, Rural Yellowhead County, Alberta

Recreational property located in Yellowhead County. The property is 7.5 acres with no public access. There is a trail along the property. There is an old cabin base that currently sits along the trail. Property is approximately 30m (100 feet ) wide by 1km long

## Essential Information

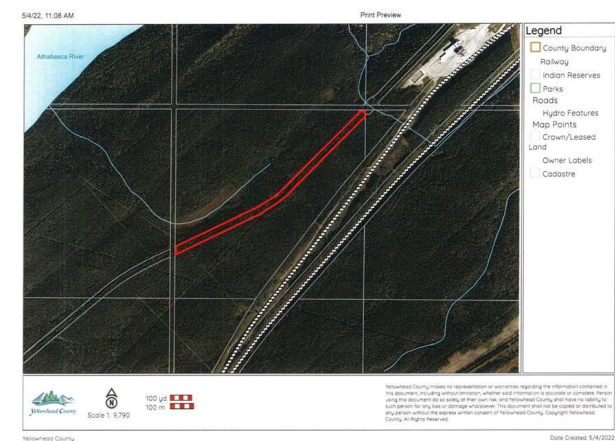
|           |                  |
|-----------|------------------|
| MLS® #    | A1221557         |
| Price     | \$59,000         |
| Bathrooms | 0.00             |
| Acres     | 7.50             |
| Type      | Land             |
| Sub-Type  | Residential Land |
| Status    | Active           |

## Community Information

|             |                         |
|-------------|-------------------------|
| Address     | 5-23-52-20 Nw           |
| Subdivision | NONE                    |
| City        | Rural Yellowhead County |
| County      | Yellowhead County       |
| Province    | Alberta                 |
| Postal Code | T7V 1A0                 |

## Additional Information

|                |                |
|----------------|----------------|
| Date Listed    | May 20th, 2022 |
| Days on Market | 1120           |
| Zoning         | ND             |



<https://map.munlight.com/YellowheadRegionalContent/StaticMapPage.aspx?tabid=1>

1/1



**Listing Details**

Listing Office                RE/MAX 2000 REALTY

Data is supplied by Pillar 9â„¢ MLS® System. Pillar 9â„¢ is the owner of the copyright in its MLS® System. Data is deemed reliable but is not guaranteed accurate by Pillar 9â„¢. The trademarks MLS®, Multiple Listing Service® and the associated logos are owned by The Canadian Real Estate Association (CREA) and identify the quality of services provided by real estate professionals who are members of CREA. Used under license.